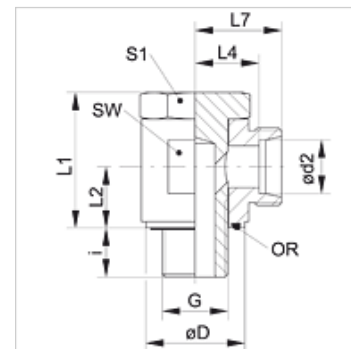


Свойства	
Съединение 1	външна резба BSP цилиндрична
Форма на уплътнение 1	форма E
Съединение 2	метрична външна резба цилиндрична
Форма на уплътнение 2	24° вътрешен конус
Конструкция	завъртащо се резбово съединение без дросел
Модификация	ъгъл 90°
Стандарт	DIN 2353 ISO 8434-1
Обем на доставката	щуцер (без холендрова гайка и режещ пръстен)
Материал	стомана
Повърхностно защитно покритие	с галванично покритие



Указание

Указания за монтаж, сглобяване, натоварване на налягане и допустими работни температури можете да видите от техническата информация за резбови тръбни съединения.

Артикул

Обозначение	Конструктивна поредица	Работно налягане bar	Ø d2	G	Ø D	i	L1	L2	L4	L7	SW	S1	OR
			(mm)		(mm)	(mm)	(mm)	(mm)	(mm)	(mm)	(mm)		
XSDOR 04 LL	LL	PN 100	4	G 1/8" -28	14,5	8,0	23,5	10,5	14,0	18,0	17	17	7,65 x 1,78
XSDOR 06 LL	LL	PN 100	6	G 1/8" -28	14,5	8,0	23,5	10,5	13,5	19,0	17	17	7,65 x 1,78
XSDOR 08 LL	LL	PN 100	8	G 1/8" -28	14,5	8,0	23,5	10,5	13,5	19,0	17	17	7,65 x 1,78
XSDOR NW 04 HL	L	PN 315	6	G 1/8" -28	14,0	8,0	24,0	10,5	12,0	19,0	17	17	7,65 x 1,78
XSDOR NW 06 HL	L	PN 315	8	G 1/4" -19	18,0	12,0	30,0	14,0	14,5	21,5	22	19	11,10 x 1,78
XSDOR NW 08 HL	L	PN 315	10	G 1/4" -19	18,0	12,0	30,0	14,0	15,5	22,5	22	19	11,10 x 1,78
XSDOR NW 10 HL 1/4	L	PN 315	12	G 1/4" -19	19,0	12,0	34,0	16,5	18,0	25,0	27	19	11,10 x 1,78
XSDOR NW 10 HL	L	PN 315	12	G 3/8" -19	22,0	12,0	36,0	16,5	18,0	25,0	27	24	14,00 x 1,78
XSDOR NW 10 HL 1/2	L	PN 315	12	G 1/2" -14	27,0	14,0	46,0	21,5	20,5	27,5	32	27	18,77 x 1,78
XSDOR NW 13 HL	L	PN 315	15	G 1/2" -14	26,0	12,0	45,0	21,5	21,5	28,5	32	30	18,77 x 1,78
XSDOR NW 16 HL	L	PN 315	18	G 1/2" -14	26,0	14,0	45,0	21,5	21,0	28,5	32	30	18,77 x 1,78
XSDOR NW 20 HL	L	PN 160	22	G 3/4" -14	32,0	16,0	53,0	24,0	27,5	35,0	41	36	23,81 x 2,62
XSDOR NW 25 HL	L	PN 160	28	G 1" -11	39,0	18,0	66,0	30,5	32,0	39,5	50	46	29,82 x 2,62
XSDOR NW 32 HL	L	PN 160	35	G 1,1/4" -11	49,0	20,0	76,0	35,5	36,0	46,5	60	55	37,77 x 2,62
XSDOR NW 40 HL	L	PN 160	42	G 1,1/2" -11	55,0	22,0	87,0	40,5	40,5	51,5	70	60	41,28 x 3,53
XSDOR NW 03 HS	S	PN 400	6	G 1/4" -19	18,0	12,0	30,0	14,0	16,5	23,5	22	19	11,10 x 1,78
XSDOR NW 04 HS	S	PN 400	8	G 1/4" -19	18,0	12,0	30,0	14,0	16,5	23,5	22	19	11,10 x 1,78
XSDOR NW 06 HS	S	PN 400	10	G 3/8" -19	22,0	12,0	36,0	16,5	18,5	26,0	27	24	14,00 x 1,78
XSDOR NW 08 HS	S	PN 400	12	G 3/8" -19	22,0	12,0	36,0	16,5	18,5	26,0	27	24	14,00 x 1,78
XSDOR NW 10 HS	S	PN 400	14	G 1/2" -14	26,0	14,0	45,0	21,5	22,5	30,5	32	30	18,77 x 1,78
XSDOR NW 13 HS	S	PN 315	16	G 1/2" -14	26,0	14,0	45,0	21,5	22,0	30,5	32	30	18,77 x 1,78
XSDOR NW 16 HS	S	PN 315	20	G 3/4" -14	32,0	16,0	53,0	24,0	26,5	37,0	41	36	23,81 x 2,62
XSDOR NW 20 HS	S	PN 250	25	G 1" -11	39,0	18,0	66,0	30,5	31,5	43,5	50	46	29,82 x 2,62
XSDOR NW 25 HS	S	PN 160	30	G 1,1/4" -11	49,0	20,0	76,0	35,5	37,0	50,5	60	55	37,77 x 2,62
XSDOR NW 32 HS	S	PN 160	38	G 1,1/2" -11	55,0	22,0	87,0	40,5	41,5	57,5	70	60	41,28 x 3,53

PN = номинално налягане PB = макс. работно налягане – конструктивна поредица: LL = много лек L = лек S = тежък – Ø = външен диаметър на тръбата

Варианти на продукта

XSDOR VA	Завъртащо се резбово съединение, без дросел, W90°, благородна стомана
SDOR	Завъртащо се резбово съединение, без дросел, W90°, стомана