

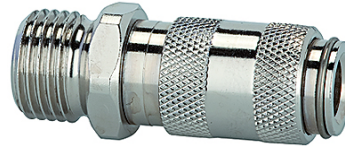
# K-SVKM NW 2,7 AG MS NI

Quick disconnect couplings DN 2.7, nickel-plated brass, male

**HANSA FLEX**

## Свойства

Работно налягане	0 - 35 bar, maximum static working pressure (non-pulsating)
протичане въздух	165 l/min (at 6 bar and $\Delta p = 0.5$ bar)
температура на средата	-20 °C to +100 °C
корпус, втулка, корпус на клапан	Nickel-plated brass
пружина, пружинен спирален пръстен, сачми	stain less steel
уплътняващ материал	NBR



## Указание

Други данни при запитване.

## Описание

One-hand quick disconnect coupling, one side sealing, extremely compact, with a large bore and a small pressure drop. Ideal for: Medical & Dental equipment, instrumentation and control, laboratory equipment, chemical applications, small tools, analysis, miniature pneumatics, engineering.

## Артикул

Обозначение	Съединение	Дължина (mm)	SW (mm)
K- 07 35 06 18	M 5 male	26,0	9
K- 07 35 06 19	G 1/8 male	28,0	11