

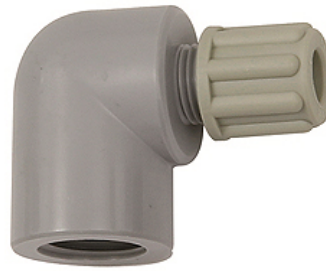
K-W90 GAM IG

Female elbows with female G thread

HANSA FLEX

Свойства

Работно налягане	Dependent on operating temperature; Max. 10 bar (at 20 °C); Max. 1 bar (at 60 °C)
завинтващ се корпус	Polyamide (PA)
стягащ пръстен	Polypropylene (PP)
гайка	Polypropylene (PP)



Указание

Други данни при запитване.

Описание

Manufactured from high impact-resistant, UV-stabilised engineering plastic, extremely resistant to weathering. Good chemical resistance to benzene, diesel oil, fuel oil and alkalis.
Not suitable for use with acids.

Артикул

Обозначение	Резба	за маркуч	L1 (mm)	L2 (mm)
K- 07 40 32 98	G 1/8	4 mm / 6 mm	26,0	17,0
K- 07 40 32 99	G 1/8	6 mm / 8 mm	29,0	17,0
K- 07 40 33 00	G 1/4	4 mm / 6 mm	29,0	20,0
K- 07 40 33 01	G 1/4	6 mm / 8 mm	32,0	20,0
K- 07 40 33 02	G 1/4	8 mm / 10 mm	35,0	20,0