

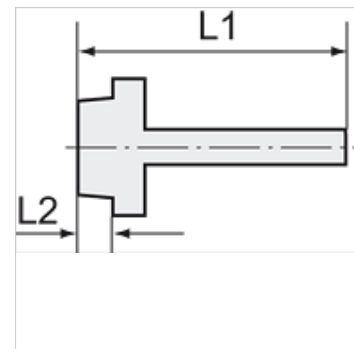
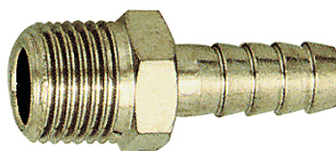
# K-TR AG-K MS NI

Male hose fittings, conical male thread - nickel-plated brass

**HANSA FLEX**

## Свойства

работна температура	Max. 150 °C
налягане	Max. 60 bar
Материал	месинг никелиран



## Указание

The dimensions of the standard screw fittings may change slightly during the life of the catalogue as a result of optimisation processes.  
Други данни при запитване.

## Описание

Suitable for air, water, oil, steam, etc.

## Допълнителна информация

Further types and dimensions on request.

## Артикул

Обозначение	Резба	за маркуч	L1 (mm)	L2 (mm)	SW
K- 07 40 13 44	R 1/8	LW 6 mm	31,5	8,0	12 mm
K- 07 40 13 45	R 1/8	LW 8 mm	31,5	8,0	12 mm
K- 07 40 13 46	R 1/8	LW 9 mm	31,5	8,0	12 mm
K- 07 40 13 47	R 1/8	LW 10 mm	32,5	8,0	12 mm
K- 07 40 13 48	R 1/4	LW 6 mm	35,0	11,0	14 mm
K- 07 40 13 49	R 1/4	LW 8 mm	35,0	11,0	14 mm
K- 07 40 13 50	R 1/4	LW 9 mm	35,0	11,0	14 mm
K- 07 40 13 51	R 1/4	LW 10 mm	36,0	11,0	14 mm
K- 07 40 13 52	R 1/4	LW 12 mm	36,0	11,0	14 mm
K- 07 40 49 75	R 1/4	LW 13 mm	39,5	11,5	14 mm
K- 07 40 13 53	R 3/8	LW 9 mm	35,5	11,5	17 mm
K- 07 40 13 54	R 3/8	LW 10 mm	36,5	11,5	17 mm
K- 07 40 13 55	R 3/8	LW 12 mm	36,5	11,5	17 mm
K- 07 40 49 77	R 3/8	LW 13 mm	41,0	13,0	17 mm
K- 07 40 13 56	R 1/2	LW 9 mm	38,5	14,0	22 mm
K- 07 40 13 57	R 1/2	LW 10 mm	39,5	14,0	22 mm
K- 07 40 13 58	R 1/2	LW 12 mm	39,5	14,0	22 mm
K- 07 40 49 78	R 1/2	LW 13 mm	44,5	15,5	22 mm
K- 07 40 49 79	R 1/2	LW 16 mm	44,5	15,5	22 mm
K- 07 40 49 80	R 1/2	LW 19 mm	44,5	15,5	22 mm