

# K-RD NIPPEL LANG ES

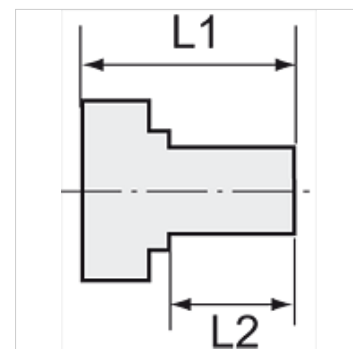
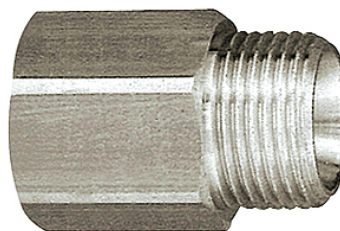
Reducing nipples, long type

**HANSA FLEX**

## Свойства

работно налягане Max. 20 bar

Материал благородна стомана 1.4571



## Указание

The dimensions of the standard screw fittings may change slightly during the life of the catalogue as a result of optimisation processes.

Други данни при запитване.

## Допълнителна информация

Further types and dimensions on request.

## Артикул

| Обозначение    | резба външно | резба вътрешно | L1<br>(mm) | L2<br>(mm) | SW    |
|----------------|--------------|----------------|------------|------------|-------|
| K- 07 40 15 38 | M 5          | M 5            | 16,0       | 5,5        | 10 mm |
| K- 07 40 15 39 | M 5          | G 1/8          | 17,0       | 5,0        | 14 mm |
| K- 07 40 15 43 | G 1/8        | G 1/8          | 23,0       | 8,0        | 14 mm |
| K- 07 40 15 40 | G 1/8        | G 1/4          | 26,0       | 10,0       | 17 mm |
| K- 07 40 15 44 | G 1/4        | G 1/8          | 28,0       | 10,0       | 17 mm |
| K- 07 40 15 45 | G 1/4        | G 1/4          | 28,0       | 10,0       | 17 mm |
| K- 07 40 15 41 | G 1/4        | G 3/8          | 26,0       | 10,0       | 19 mm |
| K- 07 40 15 46 | G 3/8        | G 1/4          | 29,0       | 10,0       | 19 mm |
| K- 07 40 15 47 | G 3/8        | G 3/8          | 29,0       | 10,0       | 19 mm |
| K- 07 40 15 42 | G 3/8        | G 1/2          | 27,0       | 12,0       | 24 mm |
| K- 07 40 15 48 | G 1/2        | G 3/8          | 34,0       | 12,0       | 24 mm |
| K- 07 40 15 49 | G 1/2        | G 1/2          | 34,0       | 12,0       | 24 mm |
| K- 07 40 15 50 | G 1/2        | G 3/4          | 38,0       | 13,0       | 32 mm |