

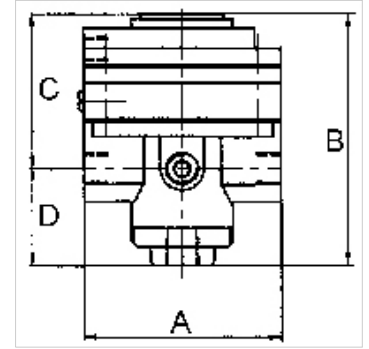
# K-PRAEZI DRUCKREGL PNEU FERN

Precision pressure regulators

**HANSA FLEX**

## Свойства

входящо налягане	Max. 16 bar
температура на средата	max. 60 °C
околна температура	Max. 60 °C
Течности	Micro-filtered, unoiled compressed air (0.01 µm)
съединение манометър	G 1/4
протичане	3000 l/min
съединение за обезвъздушаване	G 3/8 (for mounting a silencer)
налягане на управление	Max. 10 bar
управляващо съединение за въздух	G 1/8
уплътняващ материал	NBR
корпус	Die-cast zinc, painted black
разход на собствен въздух	6 l/min at Pin = 16 bar



## Указание

Attention! A set of wearing parts cannot be supplied! These pressure regulators may only be opened in the factory! The given flow rates are based on the following parameters: 3000 l/min: P1: 5 bar, P2: 3 bar,  $\Delta p \leq 0,1$  bar.

Други данни при запитване.

## Описание

With high flow rate and large secondary relief port. Pneumatically controlled diaphragm pressure regulators with large secondary relief port for applications requiring an extremely accurate working pressure, especially at high flow rates. We recommend our »multifix« series of pilot controllers.

## Допълнителна информация

1500 l/min: P1: 10 bar, P2: 7 bar,  $\Delta p \leq 0.1$  bar.

## Артикул

Обозначение	Резба	диапазон на регулиране	A (mm)	B	C (mm)	D (mm)
K- 07 25 09 35	G 1/2	0.05 - 7 bar (max. 10 bar)	82,0	108,0 mm	64,5	43,5

## Резервни части

K-HALTERBAUSATZ STANDARD	Holder
K-KM MS	Hexagonal lock nuts, brass
K-SCHALLDAEPFER VYON	Vyon silencers
K-FILTERELEMENT	Filter element
K-XV AGM 2	Double nipples, parallel male thread