

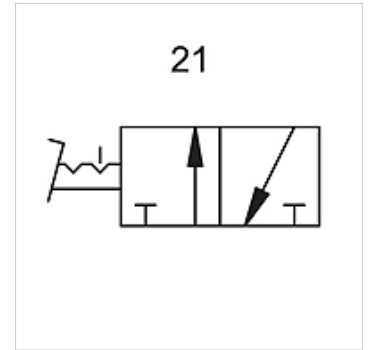
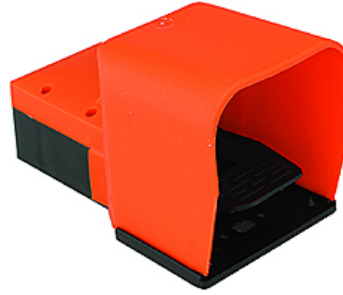
# K-WFV 3/2 RASTEND FUS

3/2-way foot-operated valves (bistable, latching, with foot guard)

**HANSA FLEX**

## Свойства

|                                   |   |
|-----------------------------------|---|
| Работно налягане                  | 2.5 - 10 bar                                |
| Температурен диапазон             | -10 °C to +60 °C                            |
| протичане при 6,3 bar и Δ 0,5 bar | 60 NI/min (4 mm and M5), 640 NI/min (G 1/4) |
| протичане при 6,3 bar и Δ 1 bar   | 95 NI/min (4 mm and M5), 840 NI/min (G 1/4) |



## Указание

Други данни при запитване.

## Описание

Foot-operated valves, 3/2- and 5/2-way types, bistable or monostable (non-latching).

## Артикул

| Обозначение    | Съединение | електрическа схема номер |
|----------------|------------|--------------------------|
| K- 07 15 00 21 | M 5        | 21                       |
| K- 07 15 00 22 | 4 mm       | 21                       |