

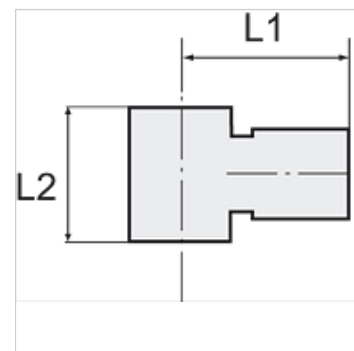
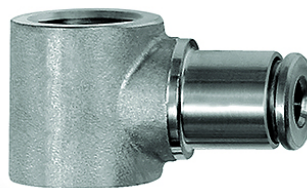
# K-L-RINGSTUECK

Ring nipples, single

**HANSA FLEX**

## Свойства

работно налягане пулсиращо	Max. 10 bar
налягане	Max. 15 bar (depending on pipe quality)
подходящ тръбен материал	PVDF, PTFE, stainless steel, PA, PU
Стандарт	G thread acc. to DIN EN ISO 228-1
околна температура	-20 °C to max. +150 °C (depending on pipe quality and diameter)
Материал	благородна стомана 1.4404
уплътняващ материал	FKM



## Указание

Други данни при запитване.

## Описание

For use with aggressive media and in areas with corrosive outside influences, in the food processing industry and in hygienic and sanitary applications.

## Артикул

Обозначение	Резба	за външен Ø на маркуча	L1 (mm)	L2 (mm)
K- 07 40 47 10	G 1/8	4 mm	19,5	15,0
K- 07 40 47 11	G 1/8	6 mm	22,0	15,0
K- 07 40 47 12	G 1/8	8 mm	22,5	15,0
K- 07 40 47 08	G 1/4	6 mm	23,5	17,0
K- 07 40 47 09	G 1/4	8 mm	24,0	17,0
K- 07 40 47 07	G 1/4	10 mm	27,0	17,0
K- 07 40 47 13	G 3/8	10 mm	29,0	20,0
K- 07 40 47 14	G 3/8	12 mm	31,0	20,0
K- 07 40 47 06	G 1/2	12 mm	33,0	24,0