

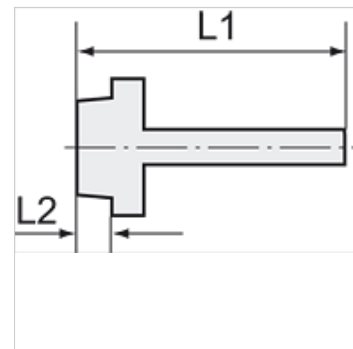
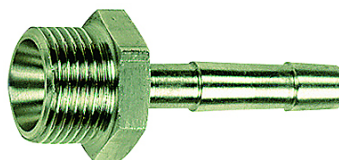
K-TR AG MS NI

Male hose fittings, parallel male thread - nickel plated brass

HANSA FLEX

Свойства

работна температура	Max. 150 °C
налягане	Max. 60 bar
Материал	месинг никелиран



Указание

The dimensions of the standard screw fittings may change slightly during the life of the catalogue as a result of optimisation processes.
Други данни при запитване.

Описание

Suitable for air, water, oil, steam, etc.

Допълнителна информация

Further types and dimensions on request.

Артикул

Обозначение	Резба	за маркуч	L1 (mm)	L2 (mm)	SW
K- 07 40 49 72	G 1/8	LW 6 mm	36,0	7,0	14 mm
K- 07 40 49 73	G 1/8	LW 8 mm	36,0	7,0	14 mm
K- 07 40 49 74	G 1/8	LW 9 mm	36,0	7,0	14 mm
K- 07 40 49 15	G 1/4	LW 4 mm	36,0	9,0	17 mm
K- 07 40 49 18	G 1/4	LW 6 mm	39,0	9,0	17 mm
K- 07 40 49 19	G 1/4	LW 8 mm	39,0	9,0	17 mm
K- 07 40 49 23	G 1/4	LW 9 mm	39,0	9,0	17 mm
K- 07 40 49 24	G 1/4	LW 10 mm	39,0	9,0	17 mm
K- 07 40 49 25	G 1/4	LW 13 mm	42,0	9,0	17 mm
K- 07 40 49 28	G 3/8	LW 8 mm	39,0	9,0	19 mm
K- 07 40 49 32	G 3/8	LW 9 mm	39,0	9,0	19 mm
K- 07 40 49 33	G 3/8	LW 10 mm	39,0	9,0	19 mm
K- 07 40 49 35	G 3/8	LW 13 mm	42,0	9,0	19 mm
K- 07 40 49 38	G 1/2	LW 8 mm	42,0	11,0	24 mm
K- 07 40 49 41	G 1/2	LW 9 mm	42,0	11,0	24 mm
K- 07 40 49 42	G 1/2	LW 10 mm	42,0	11,0	24 mm
K- 07 40 49 47	G 1/2	LW 13 mm	45,0	11,0	24 mm
K- 07 40 49 48	G 1/2	LW 16 mm	53,0	11,0	24 mm
K- 07 40 49 49	G 1/2	LW 19 mm	53,0	11,0	24 mm
K- 07 40 49 50	G 3/4	LW 13 mm	51,0	12,0	32 mm
K- 07 40 49 51	G 3/4	LW 16 mm	51,0	12,0	32 mm
K- 07 40 49 53	G 3/4	LW 19 mm	54,0	12,0	32 mm
K- 07 40 49 55	G 3/4	LW 25 mm	54,0	12,0	32 mm
K- 07 40 49 60	G 1	LW 25 mm	49,0	15,0	34 mm
K- 07 40 49 68	G 1	LW 32 mm	55,0	13,0	38 mm