

K-TR AG-K

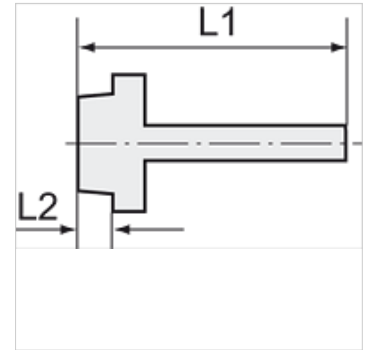
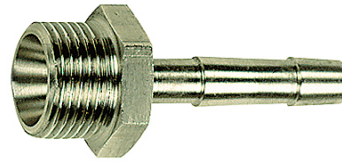
Male hose fittings with conical male thread

HANSA FLEX

Свойства

работно налягане Max. 20 bar

Материал благородна стомана 1.4571



Указание

The dimensions of the standard screw fittings may change slightly during the life of the catalogue as a result of optimisation processes.

Други данни при запитване.

Допълнителна информация

Further types and dimensions on request.

Артикул

Обозначение	Резба	за маркуч	L1 (mm)	L2 (mm)	SW
K- 07 40 49 22	R 1/4	LW 9 mm	39,7	9,7	17 mm
K- 07 40 49 31	R 3/8	LW 9 mm	40,1	10,1	19 mm
K- 07 40 49 34	R 3/8	LW 13 mm	43,1	10,1	19 mm
K- 07 40 49 45	R 1/2	LW 13 mm	47,2	13,2	24 mm
K- 07 40 49 46	R 1/2	LW 19 mm	55,2	13,2	24 mm
K- 07 40 49 52	R 3/4	LW 19 mm	56,2	14,5	32 mm
K- 07 40 49 59	R 1	LW 25 mm	58,8	16,8	38 mm