

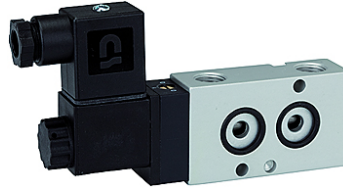
K-WV 3/2 LB NAMUR GETAUSCHT

3/2-way spool valves with NAMUR style interface, NC, ports 1 and 3 or 2 and 3 swapped

HANSA FLEX

Свойства

Течности	Air, neutral gases, filtered
работно налягане	1.5 to 10 bar
работна температура	-20 °C to +70 °C
електрическо съединение	Plug connector PG 9
Съдържа се в обема на доставката	Plug connector PG 9, 1 coding pin, 2 O-rings, 2 fixing screws
консумирана енергия	3 W=/5 VA~
корпус	Aluminium, anodised
шибър	Stainless steel
уплътняващ материал	NBR



Указание

Други данни при запитване.

Описание

3/2 and 5/2-way spool valves, monostable, with air purging function and pneumatic spring return. With latching manual operator and optional outgoing air restriction.

Two or three-piece service units with excellent flow rates in modern design.
Lockable diaphragm pressure regulator with secondary ventilation, oil can be filled without interrupting operation.

Артикул

Обозначение	Напрежение	Съединение	DN	протичане (L/min)
K- 07 15 00 05	230 V, 50 Hz	G 1/4	7	1250
K- 07 15 00 06	24 V DC	G 1/4	7	1250