

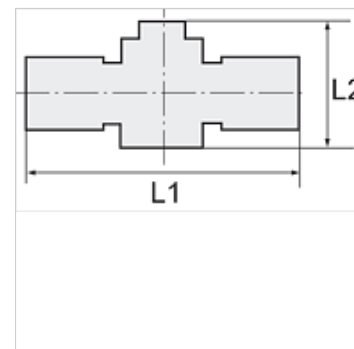
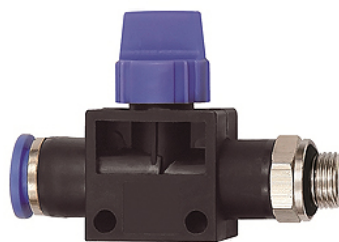
K-WV 3/2 STECK SCHL GEW

3/2-way pilot valves with male thread and plug connection, tube to flow direction from port, parallel male thread with O-ring

HANSA FLEX

Свойства

работно налягане	Max. 15 bar, coarse vacuum
Диапазон на използване	Air, vacuum
препоръчителни маркучи	PU or PA (nylon)
Течности	Compressed air and all gases or liquids that are compatible with the materials
Температурен диапазон	-20 °C to +80 °C
уплътняваща повърхност	Parallel version: O-ring in housing, Conical version: thread coating
Материал	Plastic, Nickel plated brass
притискащ пръстен	Plastic



Указание

Други данни при запитване.

Описание

Push-in fittings series manufactured in plastic and nickel-plated brass. All parts are suitable for use with hoses, tubes or pipes made of plastic and copper.

Артикул

Обозначение	Резба	за външен Ø на маркуча	L1 (mm)	L2 (mm)	SW
K- 07 40 45 92	G 1/8	6 mm	58,1	41,5	14 mm
K- 07 40 45 93	G 1/8	8 mm	58,8	41,5	14 mm
K- 07 40 45 90	G 1/4	6 mm	59,6	41,5	14 mm
K- 07 40 45 91	G 1/4	8 mm	60,0	41,5	17 mm
K- 07 40 45 88	G 1/4	10 mm	70,9	46,0	17 mm
K- 07 40 45 89	G 1/4	12 mm	70,9	46,0	21 mm
K- 07 40 45 98	G 3/8	6 mm	61,1	41,5	14 mm
K- 07 40 45 99	G 3/8	8 mm	61,5	41,5	17 mm
K- 07 40 45 96	G 3/8	10 mm	72,4	46,0	20 mm
K- 07 40 45 97	G 3/8	12 mm	71,9	46,0	21 mm
K- 07 40 45 86	G 1/2	10 mm	74,9	46,0	24 mm
K- 07 40 45 87	G 1/2	12 mm	75,4	46,0	24 mm