

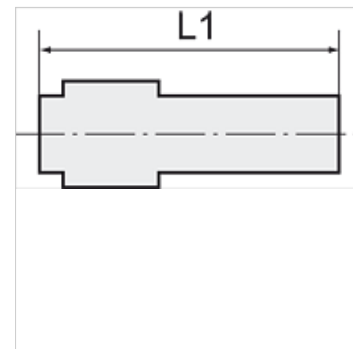
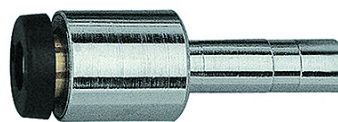
K-STECKVERBINDU ST RED 2

Reducers with push-in plug

HANSA FLEX

Свойства

работно налягане	Max. 16 bar
работна температура	-20 °C to +80 °C
Материал	месинг никелиран
притискащ пръстен	Hostaform
затягащ пръстен	Stainless steel



Указание

Други данни при запитване.

Описание

The advanced version of our highly successful push-in fittings series manufactured in nickel-plated brass. Advantages of this new, optimised series: Much easier connection and disconnection of the hose, even with repeated mounting, can also be used for non-calibrated hoses, suitable for vacuum operation.

Артикул

Обозначение	за външен Ø на маркуча	L1 (mm)	щепселен нипел (mm)
K- 07 40 26 16	3 mm	26,0	4
K- 07 40 26 17	4 mm	29,9	6
K- 07 40 26 18	5 mm	36,0	6
K- 07 40 26 19	4 mm	28,7	8
K- 07 40 26 20	5 mm	34,5	8
K- 07 40 26 21	6 mm	31,9	8
K- 07 40 26 22	6 mm	36,2	10
K- 07 40 26 23	8 mm	40,8	10
K- 07 40 26 24	8 mm	40,1	12
K- 07 40 26 25	10 mm	44,3	12
K- 07 40 26 26	10 mm	44,3	14
K- 07 40 26 27	12 mm	50,0	14