

# K-RD STUECKE PP

Reducers

**HANSA FLEX**

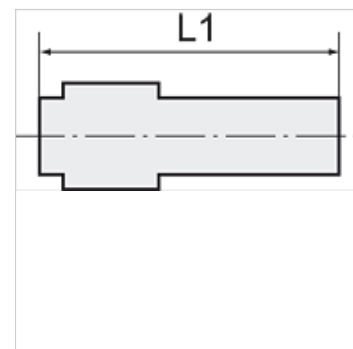
## Свойства

работно налягане on request

работна температура Max. +20 °C

Материал Polypropylene (PP)

уплътняващ материал NBR



## Указание

Други данни при запитване.

## Описание

Lightweight, push-in fittings distinguished by high strength, toughness, resistance to abrasion and impact resistance - ideal for a wide range of applications. Plastic and metal tubes are connected together quickly and easily. Suitable for compressed air or liquids, with good resistance to a large number of chemicals.

## Артикул

Обозначение	за външен Ø на маркуча	L1 (mm)	щуцер (mm)
K- 07 40 29 00	22 mm	127,0	32
K- 07 40 29 01	28 mm	133,3	32