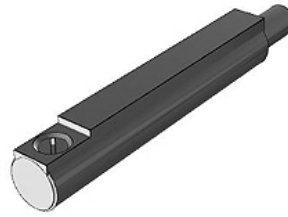


K-REED-SCHALTER D

Reed switch D

Свойства

електрически вход	axial
дължина кабел	3 m
серия	D



Описание

Reed switch, series D-A93, direct mounting in round profile groove, version: electrical input port axial, with LED, with cast-in cable, cable length 3.0 m

Артикул

Обозначение	Изпълнение	дефиниция
K- 07 50 00 01	with LED, with grommet, without connector	Reed-switch
K- 07 50 00 02	with LED, with M8 connector (3 pin)	Reed-switch