

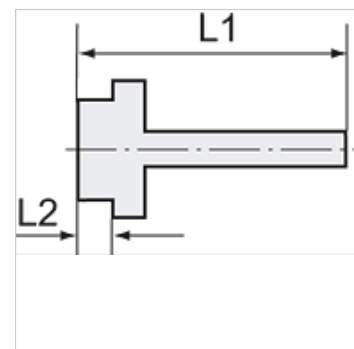
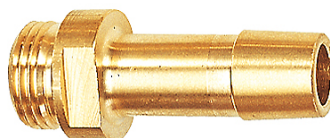
K-EST 12 MS

Male stems for coupling NW12 MS

HANSA FLEX

Свойства

работно налягане	10 bar
температура на средата	max. +90 °C
околна температура	Max. +90 °C
Материал	Brass with a bare metal surface



Указание

The dimensions of the standard screw fittings may change slightly during the life of the catalogue as a result of optimisation processes.
Други данни при запитване.

Допълнителна информация

Further types and dimensions on request.

Артикул

Обозначение	Резба	за маркуч	L1 (mm)	L2 (mm)	SW
K- 07 35 00 88	G 1/2	LW 16 mm	58,0	10,0	20 mm