

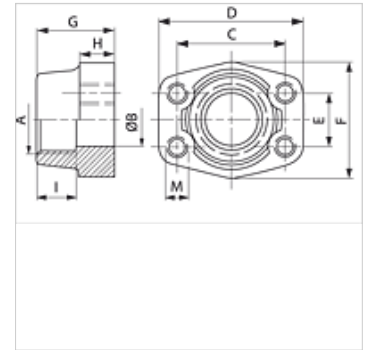
GFS N M (3000 / 6000 PSI)

SAE protipříruba k zašroubování, NPT

HANSA FLEX

Vlastnosti

| | |
|--------------------------|---------------------------------|
| Norma | SAE J 518 C ISO 6162 |
| Provedení | přímé |
| Konstrukce | Protipříruba k zašroubování SAE |
| Upevnění | Vnitřní závit pro šrouby UNC |
| Obsah dodávky | jenom příruba |
| Materiál | S355J2G3 (ST52.3) |
| Povrchová ochrana | černě olejovaný |



Upozornění

Uvedený maximální provozní tlak se vztahuje na přírubu! Skutečný provozní tlak je dán trubkou (tloušťka stěny) a rovněž jakostí trubky!

Výrobek

| Označení | Řada tlaků | PB 10.9 | Konstrukční velikost | A | Ø B | C | D | E | F | G | H | I | M metr. |
|-----------------|------------|---------|----------------------|------------------|------|-------|------|------|------|------|------|------|---------|
| | (bar) | | | | (mm) | (mm) | (mm) | (mm) | (mm) | (mm) | (mm) | (mm) | |
| GFS 80 N | 3000 PSI | 350 | 1/2" | NPT 1/2" -14 | 13 | 38,1 | 54 | 17,5 | 46 | 36 | 16 | 19 | M 8 |
| GFS 80 N 3/8 | 3000 PSI | 350 | 1/2" | NPT 3/8" -18 | 13 | 38,1 | 54 | 17,5 | 46 | 36 | 16 | 19 | M 8 |
| GFS 100 N | 3000 PSI | 350 | 3/4" | NPT 3/4" -14 | 19 | 47,6 | 65 | 22,2 | 50 | 36 | 18 | 19 | M 10 |
| GFS 100 N 1/2 | 3000 PSI | 350 | 3/4" | NPT 1/2" -14 | 13 | 47,6 | 65 | 22,2 | 50 | 36 | 18 | 19 | M 10 |
| GFS 102 N | 3000 PSI | 315 | 1" | NPT 1" -11,5 | 25 | 52,4 | 70 | 26,2 | 55 | 38 | 18 | 22 | M 10 |
| GFS 102 N 3/4 | 3000 PSI | 315 | 1" | NPT 3/4" -14 | 19 | 52,4 | 70 | 26,2 | 55 | 35 | 21 | 19 | M 10 |
| GFS 104 N | 3000 PSI | 250 | 1.1/4" | NPT 1.1/4" -11,5 | 32 | 58,7 | 79 | 30,2 | 68 | 41 | 21 | 22 | M 10 |
| GFS 104 N 1 | 3000 PSI | 250 | 1.1/4" | NPT 1" -11,5 | 25 | 58,7 | 81 | 30,2 | 65 | 42 | 25 | 22 | M 10 |
| GFS 106 N | 3000 PSI | 200 | 1.1/2" | NPT 1.1/2" | 38 | 69,9 | 93 | 35,7 | 78 | 45 | 25 | 24 | M 12 |
| GFS 106 N 1 1/4 | 3000 PSI | 200 | 1.1/2" | NPT 1.1/4" -11,5 | 32 | 69,9 | 95 | 35,7 | 78 | 45 | 27 | 24 | M 12 |
| GFS 108 N | 3000 PSI | 200 | 2" | NPT 2" -11,5 | 51 | 77,8 | 102 | 42,9 | 90 | 45 | 25 | 30 | M 12 |
| GFS 108 N 1 1/2 | 3000 PSI | 200 | 2" | NPT 1.1/2" | 38 | 77,8 | 102 | 42,9 | 90 | 45 | 25 | 26 | M 12 |
| GFS 110 N | 3000 PSI | 160 | 2.1/2" | NPT 2.1/2" -11,5 | 63 | 88,9 | 114 | 50,8 | 105 | 50 | 25 | 30 | M 12 |
| GFS 112 N | 3000 PSI | 138 | 3" | NPT 3" -11,5 | 73 | 106,4 | 134 | 61,9 | 124 | 50 | 27 | 34 | M 16 |
| GFS 114 N | 3000 PSI | 35 | 3.1/2" | NPT 3.1/2" -11,5 | 89 | 120,7 | 152 | 69,9 | 136 | 48 | 27 | 34 | M 16 |
| GFS 116 N | 3000 PSI | 35 | 4" | NPT 4" -11,5 | 99 | 130,2 | 162 | 77,8 | 146 | 48 | 27 | 34 | M 16 |
| GFS 401 N | 6000 PSI | 400 | 1/2" | NPT 1/2" -14 | 13 | 40,5 | 54 | 18,2 | 46 | 36 | 16 | 19 | M 8 |
| GFS 401 N 3/8 | 6000 PSI | 400 | 1/2" | NPT 3/8" -18 | 13 | 40,5 | 54 | 18,2 | 46 | 36 | 16 | 19 | M 8 |
| GFS 402 N | 6000 PSI | 400 | 3/4" | NPT 3/4" -14 | 19 | 50,8 | 71 | 23,8 | 55 | 35 | 21 | 22 | M 10 |
| GFS 402 N 1/2 | 6000 PSI | 400 | 3/4" | NPT 1/2" -14 | 13 | 50,8 | 71 | 23,8 | 55 | 35 | 21 | 22 | M 10 |
| GFS 403 N | 6000 PSI | 400 | 1" | NPT 1" -11,5 | 25 | 57,2 | 81 | 27,8 | 65 | 42 | 25 | 24 | M 12 |
| GFS 403 N 3/4 | 6000 PSI | 400 | 1" | NPT 3/4" -14 | 19 | 57,2 | 81 | 27,8 | 65 | 42 | 25 | 24 | M 12 |
| GFS 404 N | 6000 PSI | 400 | 1.1/4" | NPT 1.1/4" -11,5 | 32 | 66,7 | 95 | 31,8 | 78 | 45 | 27 | 25 | M 14 |
| GFS 404 N 1 | 6000 PSI | 400 | 1.1/4" | NPT 1" -11,5 | 25 | 66,7 | 95 | 31,8 | 78 | 45 | 27 | 25 | M 14 |
| GFS 405 N | 6000 PSI | 400 | 1.1/2" | NPT 1.1/2" | 38 | 79,4 | 112 | 36,5 | 94 | 50 | 30 | 28 | M 16 |
| GFS 405 N 1 1/4 | 6000 PSI | 400 | 1.1/2" | NPT 1.1/4" -11,5 | 32 | 79,4 | 112 | 36,5 | 94 | 50 | 30 | 28 | M 16 |
| GFS 406 N | 6000 PSI | 400 | 2" | NPT 2" -11,5 | 51 | 96,8 | 134 | 44,5 | 114 | 65 | 37 | 30 | M 20 |
| GFS 406 N 1 1/2 | 6000 PSI | 400 | 2" | NPT 1.1/2" | 38 | 96,8 | 134 | 44,5 | 114 | 65 | 37 | 30 | M 20 |

PN = nominální tlak PB = max. provozní tlak

Varianty produktu

GFS N U (3000 / 6000 PSI) SAE protipříruba k zašroubování, NPT, jenom příruba