

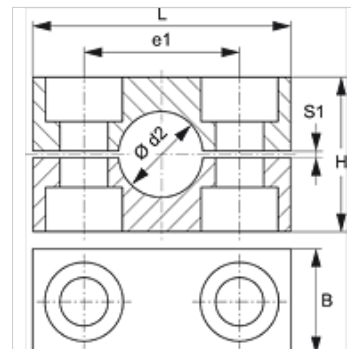
SRS 30-100 PA

Trubková spona, těžká konstrukční řada

HANSA FLEX

Vlastnosti

| | |
|---------------------|-------------------------------|
| Konstrukce | jednotrubková spona |
| Konstrukční doplněk | Vnitřní strana spony s žebrem |
| Typová řada | těžká |
| Norma | DIN 3015-2 |
| Teplota min. | -40 °C |
| Teplota max. | 120 °C |
| Materiál | polyamid 6 |



Popis

Žebra na vnitřní straně objímek působí tlumivě vůči rázům a vibracím a zachycují síly působící ve směru osy trubky. Mezera mezi oběma polovinami vyvolává předpětí trubky.

Upozornění k objednávkám

1 kus = 2 poloviny přičítky

Výrobek

| Označení | Velikost přičítky | Vnější Ø trubky d2 (mm) | Vnější Ø trubky d2 | B (mm) | e1 (mm) | H (mm) | L (mm) | S1 (mm) |
|---------------|-------------------|----------------------------|--------------------|-----------|------------|-----------|-----------|------------|
| SRS 3006 PA | 1 | 6,0 | - | 30 | 33 | 32 | 56 | 2 |
| SRS 3008 PA | 1 | 8,0 | 5/16" | 30 | 33 | 32 | 56 | 2 |
| SRS 3010 PA | 1 | 10,0 | - | 30 | 33 | 32 | 56 | 2 |
| SRS 3012 PA | 1 | 12,0 | - | 30 | 33 | 32 | 56 | 2 |
| SRS 3012.7 PA | 1 | 12,7 | 1/2" | 30 | 33 | 32 | 56 | 2 |
| SRS 3013.5 PA | 1 | 13,5 | - | 30 | 33 | 32 | 56 | 2 |
| SRS 3014 PA | 1 | 14,0 | - | 30 | 33 | 32 | 56 | 2 |
| SRS 3015 PA | 1 | 15,0 | - | 30 | 33 | 32 | 56 | 2 |
| SRS 3016 PA | 1 | 16,0 | 5/8" | 30 | 33 | 32 | 56 | 2 |
| SRS 3017.2 PA | 1 | 17,2 | - | 30 | 33 | 32 | 56 | 2 |
| SRS 3018 PA | 1 | 18,0 | - | 30 | 33 | 32 | 56 | 2 |
| SRS 4019 PA | 2 | 19,0 | 3/4" | 30 | 45 | 48 | 71 | 2 |
| SRS 4020 PA | 2 | 20,0 | - | 30 | 45 | 48 | 71 | 2 |
| SRS 4021.3 PA | 2 | 21,3 | - | 30 | 45 | 48 | 71 | 2 |
| SRS 4022 PA | 2 | 22,0 | - | 30 | 45 | 48 | 71 | 2 |
| SRS 4023 PA | 2 | 23,0 | - | 30 | 45 | 48 | 71 | 2 |
| SRS 4025 PA | 2 | 25,0 | 1" | 30 | 45 | 48 | 71 | 2 |
| SRS 4026.9 PA | 2 | 26,9 | - | 30 | 45 | 48 | 71 | 2 |
| SRS 4028 PA | 2 | 28,0 | - | 30 | 45 | 48 | 71 | 2 |
| SRS 4030 PA | 2 | 30,0 | - | 30 | 45 | 48 | 71 | 2 |
| SRS 5030 PA | 3 | 30,0 | - | 30 | 60 | 60 | 86 | 2 |
| SRS 5032 PA | 3 | 32,0 | 1.1/4" | 30 | 60 | 60 | 86 | 2 |
| SRS 5033.7 PA | 3 | 33,7 | - | 30 | 60 | 60 | 86 | 2 |
| SRS 5035 PA | 3 | 35,0 | - | 30 | 60 | 60 | 86 | 2 |
| SRS 5038 PA | 3 | 38,0 | 1.1/2" | 30 | 60 | 60 | 86 | 2 |
| SRS 5040 PA | 3 | 40,0 | - | 30 | 60 | 60 | 86 | 2 |
| SRS 5042 PA | 3 | 42,0 | - | 30 | 60 | 60 | 86 | 2 |
| SRS 6038 PA | 4 | 38,0 | 1.1/2" | 45 | 90 | 90 | 117 | 3 |
| SRS 6040 PA | 4 | 40,0 | - | 45 | 90 | 90 | 117 | 3 |
| SRS 6042 PA | 4 | 42,0 | - | 45 | 90 | 90 | 117 | 3 |
| SRS 6045 PA | 4 | 45,0 | - | 45 | 90 | 90 | 117 | 3 |
| SRS 6048.3 PA | 4 | 48,3 | - | 45 | 90 | 90 | 117 | 3 |
| SRS 6050 PA | 4 | 50,0 | - | 45 | 90 | 90 | 117 | 3 |
| SRS 6051 PA | 4 | 51,0 | 2" | 45 | 90 | 90 | 117 | 3 |
| SRS 6052 PA | 4 | 52,0 | - | 45 | 90 | 90 | 117 | 3 |
| SRS 6055 PA | 4 | 55,0 | - | 45 | 90 | 90 | 117 | 3 |
| SRS 6057 PA | 4 | 57,0 | 2.1/4" | 45 | 90 | 90 | 117 | 3 |
| SRS 6060.3 PA | 4 | 60,3 | - | 45 | 90 | 90 | 117 | 3 |
| SRS 6063 PA | 4 | 63,0 | 2.1/2" | 45 | 90 | 90 | 117 | 3 |
| SRS 6065 PA | 4 | 65,0 | - | 45 | 90 | 90 | 117 | 3 |
| SRS 6070 PA | 4 | 70,0 | - | 45 | 90 | 90 | 117 | 3 |



SRS 30-100 PA

Trubková spona, těžká konstrukční řada

HANSA FLEX

Výrobek

| Označení | Velikost přichytky | Vnější Ø trubky d2 (mm) | Vnější Ø trubky d2 | B (mm) | e1 (mm) | H (mm) | L (mm) | S1 (mm) |
|----------------|--------------------|----------------------------|--------------------|-----------|------------|-----------|-----------|------------|
| SRS 7070 PA | 5 | 70,0 | - | 60 | 122 | 120 | 154 | 5 |
| SRS 7073 PA | 5 | 73,0 | - | 60 | 122 | 120 | 154 | 5 |
| SRS 7075 PA | 5 | 75,0 | - | 60 | 122 | 120 | 154 | 5 |
| SRS 7076.1 PA | 5 | 76,1 | 3" | 60 | 122 | 120 | 154 | 5 |
| SRS 7080 PA | 5 | 80,0 | - | 60 | 122 | 120 | 154 | 5 |
| SRS 7082.5 PA | 5 | 82,5 | 3.1/4" | 60 | 122 | 120 | 154 | 5 |
| SRS 7088.9 PA | 5 | 88,9 | 3.1/2" | 60 | 122 | 120 | 154 | 5 |
| SRS 7090 PA | 5 | 90,0 | - | 60 | 122 | 120 | 154 | 5 |
| SRS 8090 PA | 6 | 90,0 | - | 80 | 168 | 170 | 205 | 6 |
| SRS 8097 PA | 6 | 97,0 | - | 80 | 168 | 170 | 205 | 6 |
| SRS 8100 PA | 6 | 100,0 | - | 80 | 168 | 170 | 205 | 6 |
| SRS 8101.6 PA | 6 | 101,6 | 4" | 80 | 168 | 170 | 205 | 6 |
| SRS 8108 PA | 6 | 108,0 | 4.1/4" | 80 | 168 | 170 | 205 | 6 |
| SRS 8114.3 PA | 6 | 114,3 | 4.1/2" | 80 | 168 | 170 | 205 | 6 |
| SRS 8127 PA | 6 | 127,0 | 5" | 80 | 168 | 170 | 205 | 6 |
| SRS 9127 PA | 7 | 127,0 | 5" | 90 | 205 | 200 | 250 | 6 |
| SRS 9133 PA | 7 | 133,0 | 5.1/4" | 90 | 205 | 200 | 250 | 6 |
| SRS 9140 PA | 7 | 140,0 | 5.1/2" | 90 | 205 | 200 | 250 | 6 |
| SRS 9150 PA | 7 | 150,0 | - | 90 | 205 | 200 | 250 | 6 |
| SRS 9152.4 PA | 7 | 152,4 | 6" | 90 | 205 | 200 | 250 | 6 |
| SRS 9159 PA | 7 | 159,0 | 6.1/4" | 90 | 205 | 200 | 250 | 6 |
| SRS 9165.1 PA | 7 | 165,1 | 6.1/2" | 90 | 205 | 200 | 250 | 6 |
| SRS 9168.3 PA | 7 | 168,3 | 6.5/8" | 90 | 205 | 200 | 250 | 6 |
| SRS 10168.3 PA | 8 | 168,3 | 6.5/8" | 120 | 265 | 270 | 320 | 6 |
| SRS 10177.8 PA | 8 | 177,8 | 7" | 120 | 265 | 270 | 320 | 6 |
| SRS 10193.7 PA | 8 | 193,7 | 7.5/8" | 120 | 265 | 270 | 320 | 6 |
| SRS 10203 PA | 8 | 203,0 | - | 120 | 265 | 270 | 320 | 6 |
| SRS 10219.1 PA | 8 | 219,1 | 8.5/8" | 120 | 265 | 270 | 320 | 6 |
| SRS 10220 PA | 8 | 220,0 | - | 120 | 265 | 270 | 320 | 6 |

Varianty produktu

| | |
|-----------------|---|
| SRS 30-100 AL | Trubková spona, těžká konstrukční řada, Vnitřní strana spony s žebrem |
| SRS 30-100 PP | Trubková spona, těžká konstrukční řada, Vnitřní strana spony s žebrem |
| SRS 30-100 PP G | Trubková spona, těžká konstrukční řada, Vnitřní strana spony hladká |
| SRS 30-100 VG | Trubková spona, těžká konstrukční řada, Vnitřní strana spony s žebrem |