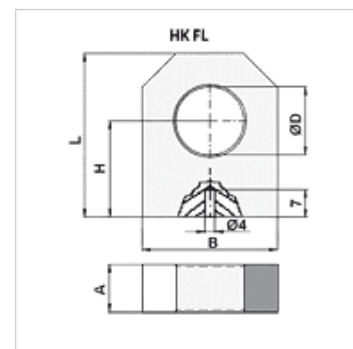


# HK FL

Otočné ložisko FL

## Vlastnosti

**Materiál** ocel S355J0 (Fe510C)



## Výrobek

Označení	A (mm)	B (mm)	H (mm)	L (mm)	Ø D (mm)	Hmotnost (kg)
HK FL 16	15,0	35,0	34,0	50,0	16,20	0,19
HK FL 20	20,0	40,0	40,0	60,0	20,25	0,38
HK FL 25	25,0	50,0	45,0	65,0	25,25	0,58
HK FL 30	30,0	60,0	50,0	75,0	30,25	0,79
HK FL 35	35,0	70,0	55,0	85,0	35,25	0,98
HK FL 40	40,0	80,0	60,0	100,0	40,25	1,22