

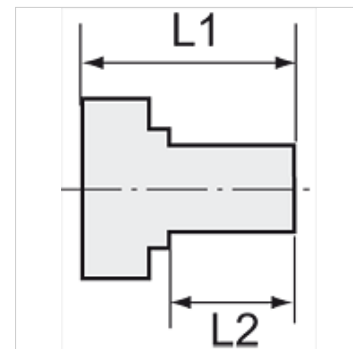
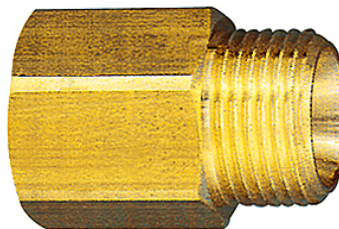
K-RD NIPPEL LANG 1

Reducing nipples, long type

HANSA FLEX

Vlastnosti

| | |
|---------------|---------------------------------|
| Pracovní tlak | 10 bar |
| Teplota média | max. +90 °C |
| Teplota okolí | Max. +90 °C |
| Materiál | Brass with a bare metal surface |



Upozornění

The dimensions of the standard screw fittings may change slightly during the life of the catalogue as a result of optimisation processes.

Další údaje na dotaz.

Další informace

Further types and dimensions on request.

Výrobek

| Označení | Závit vnější | Závit vnitřní | L1 (mm) | L2 (mm) | SW |
|----------------|--------------|---------------|------------|------------|-------|
| K- 07 40 00 65 | M 5 | M 5 | 15,0 | 5,0 | 8 mm |
| K- 07 40 00 66 | M 5 | G 1/8 | 17,0 | 5,0 | 14 mm |
| K- 07 40 00 67 | G 1/8 | M 5 | 17,0 | 7,0 | 14 mm |
| K- 07 40 00 64 | G 1/8 | G 1/4 | 26,0 | 10,0 | 17 mm |
| K- 07 40 00 70 | G 1/4 | G 1/8 | 28,0 | 10,0 | 17 mm |
| K- 07 40 00 71 | G 1/4 | G 1/4 | 28,0 | 10,0 | 17 mm |
| K- 07 40 00 68 | G 1/4 | G 3/8 | 26,0 | 10,0 | 19 mm |
| K- 07 40 00 72 | G 3/8 | G 1/4 | 29,0 | 10,0 | 19 mm |
| K- 07 40 00 73 | G 3/8 | G 3/8 | 29,0 | 10,0 | 19 mm |
| K- 07 40 00 69 | G 3/8 | G 1/2 | 27,0 | 12,0 | 24 mm |
| K- 07 40 00 74 | G 1/2 | G 3/8 | 34,0 | 12,0 | 24 mm |
| K- 07 40 00 75 | G 1/2 | G 1/2 | 34,0 | 12,0 | 24 mm |
| K- 07 40 00 76 | G 1/2 | G 3/4 | 38,0 | 13,0 | 32 mm |
| K- 07 40 00 77 | G 3/4 | G 1 | 26,0 | 11,0 | 36 mm |