

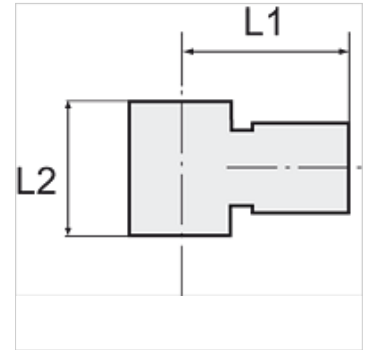
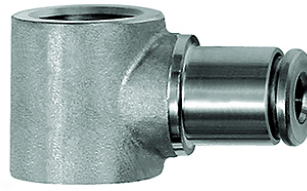
K-L-RINGSTUECK

Ring nipples, single

HANSA FLEX

Vlastnosti

Pracovní tlak pulzující	Max. 10 bar
Tlak	Max. 15 bar (depending on pipe quality)
vhodný materiál trubek	PVDF, PTFE, stainless steel, PA, PU
Norma	G thread acc. to DIN EN ISO 228-1
Teplota okolí	-20 °C to max. +150 °C (depending on pipe quality and diameter)
Materiál	Ušlechtilá ocel 1.4404
Těsnicí materiál	FKM



Upozornění

Další údaje na dotaz.

Popis

For use with aggressive media and in areas with corrosive outside influences, in the food processing industry and in hygienic and sanitary applications.

Výrobek

Označení	Závit	pro vnější Ø hadice	L1 (mm)	L2 (mm)
K- 07 40 47 10	G 1/8	4 mm	19,5	15,0
K- 07 40 47 11	G 1/8	6 mm	22,0	15,0
K- 07 40 47 12	G 1/8	8 mm	22,5	15,0
K- 07 40 47 08	G 1/4	6 mm	23,5	17,0
K- 07 40 47 09	G 1/4	8 mm	24,0	17,0
K- 07 40 47 07	G 1/4	10 mm	27,0	17,0
K- 07 40 47 13	G 3/8	10 mm	29,0	20,0
K- 07 40 47 14	G 3/8	12 mm	31,0	20,0
K- 07 40 47 06	G 1/2	12 mm	33,0	24,0