

K-VLST K AG-K IG MS NI

Extensions, short, conical male thread, parallel female thread - nickel-plated brass

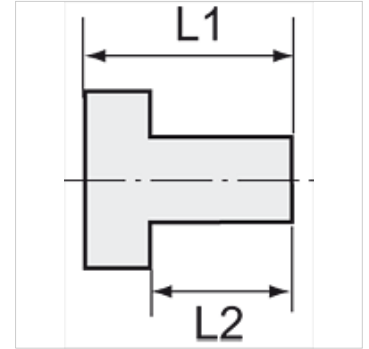
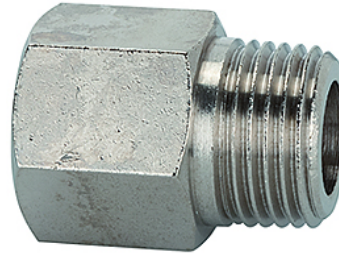
HANSA FLEX

Vlastnosti

Provozní teplota Max. 150 °C

Tlak Max. 60 bar

Materiál poniklovaná mosaz



Upozornění

The dimensions of the standard screw fittings may change slightly during the life of the catalogue as a result of optimisation processes. Další údaje na dotaz.

Popis

Suitable for air, water, oil, steam, etc.

Další informace

Further types and dimensions on request.

Výrobek

Označení	Závit vnější	Závit vnitřní	L1 (mm)	L2 (mm)	SW
K- 07 40 38 91	R 1/8	G 1/8	20,0	8,0	14 mm
K- 07 40 38 92	R 1/8	G 1/4	22,5	8,0	17 mm
K- 07 40 38 98	R 1/8	G 3/8	22,5	8,0	22 mm
K- 07 40 38 93	R 1/4	G 1/4	25,0	11,0	17 mm
K- 07 40 38 94	R 1/4	G 3/8	28,5	11,0	22 mm
K- 07 40 38 95	R 1/4	G 1/2	29,0	11,0	24 mm
K- 07 40 38 96	R 3/8	G 3/8	28,5	11,5	22 mm
K- 07 40 38 97	R 3/8	G 1/2	32,0	11,5	24 mm
K- 07 40 38 99	R 1/2	G 1/2	34,0	14,0	24 mm
K- 07 40 39 00	R 1/2	G 3/4	35,0	14,0	32 mm