

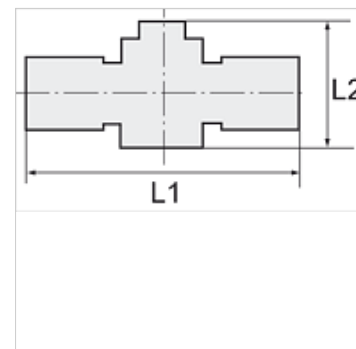
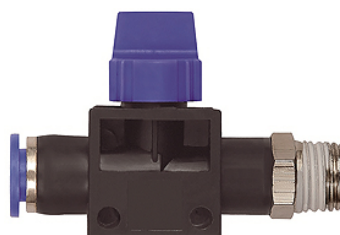
K-WV 3/2 STECK GEW SCHL 2

3/2-way pilot valves with male thread and plug connection, flow direction from port to tube, conical male thread, coated

HANSA FLEX

Vlastnosti

Pracovní tlak	Max. 15 bar, coarse vacuum
Oblast použití	Air, vacuum
doporučené hadice	PU or PA (nylon)
Média	Compressed air and all gases or liquids that are compatible with the materials
Teplotní rozsah	-20 °C to +80 °C
Těsnicí plocha	Parallel version: O-ring in housing, Conical version: thread coating
Materiál	Plastic, Nickel plated brass
Přítlačný kroužek	Plastic



Upozornění

Další údaje na dotaz.

Popis

Push-in fittings series manufactured in plastic and nickel-plated brass. All parts are suitable for use with hoses, tubes or pipes made of plastic and copper.

Výrobek

Označení	Závít	pro vnější Ø hadice	L1 (mm)	L2 (mm)	SW
K- 07 40 43 95	R 1/4	10 mm	72,6	46,0	17 mm
K- 07 40 43 99	R 1/8	6 mm	58,3	41,5	12 mm
K- 07 40 44 00	R 1/8	8 mm	58,9	41,5	14 mm
K- 07 40 43 97	R 1/4	6 mm	60,8	41,5	14 mm
K- 07 40 43 98	R 1/4	8 mm	60,9	41,5	14 mm
K- 07 40 43 96	R 1/4	12 mm	73,3	46,0	21 mm
K- 07 40 44 03	R 3/8	6 mm	62,3	41,5	17 mm
K- 07 40 44 04	R 3/8	8 mm	62,4	41,5	17 mm
K- 07 40 44 01	R 3/8	10 mm	73,6	46,0	17 mm
K- 07 40 44 02	R 3/8	12 mm	74,1	46,0	21 mm
K- 07 40 43 93	R 1/2	10 mm	77,1	46,0	21 mm
K- 07 40 43 94	R 1/2	12 mm	77,3	46,0	21 mm