

K-UEM MS NI

Hexagonal swivel nuts - nickel plated brass

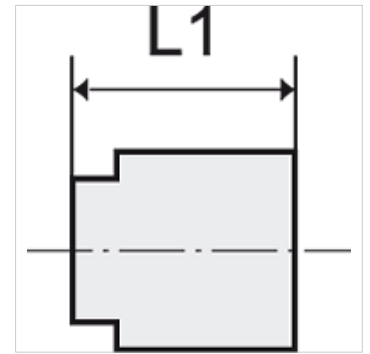
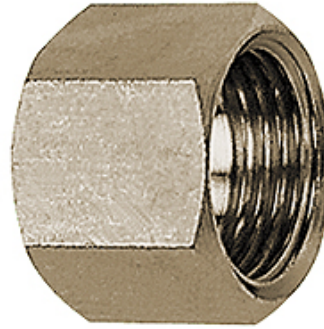
HANSA FLEX

Vlastnosti

Provozní teplota Max. 150 °C

Tlak Max. 60 bar

Materiál poniklovaná mosaz



Upozornění

The dimensions of the standard screw fittings may change slightly during the life of the catalogue as a result of optimisation processes.

Další údaje na dotaz.

Popis

Suitable for air, water, oil, steam, etc.

Další informace

Further types and dimensions on request.

Výrobek

Označení	Závit	pro velikost průchodky	L1 (mm)	SW
K- 07 40 44 22	G 1/8	I.D. 4, I.D. 6	13,0	14 mm
K- 07 40 44 23	G 1/4	I.D. 4, I.D. 6	15,0	17 mm
K- 07 40 44 24	G 3/8	I.D. 9	15,0	19 mm
K- 07 40 44 25	G 1/2	I.D. 4, I.D. 6, I.D. 9	16,0	24 mm