

# K-RD NIPPEL AGRK IGR MS NI

Reducing nipples, conical male thread, parallel female thread - nickel-plated brass

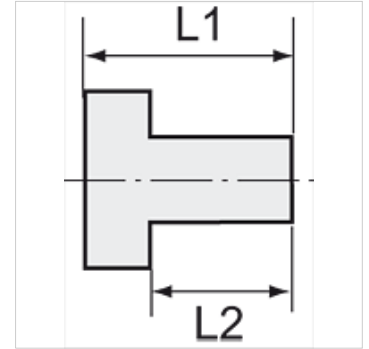
**HANSA FLEX**

## Vlastnosti

Provozní teplota Max. 150 °C

Tlak Max. 60 bar

Materiál poniklovaná mosaz



## Upozornění

The dimensions of the standard screw fittings may change slightly during the life of the catalogue as a result of optimisation processes.

Další údaje na dotaz.

## Popis

Suitable for air, water, oil, steam, etc.

## Další informace

Further types and dimensions on request.

## Výrobek

| Označení       | Závit vnější | Závit vnitřní | L1 (mm) | L2 (mm) | SW    |
|----------------|--------------|---------------|---------|---------|-------|
| K- 07 40 15 66 | R 1/4        | G 1/8         | 16,0    | 11,0    | 14 mm |
| K- 07 40 15 67 | R 3/8        | G 1/8         | 17,0    | 11,5    | 17 mm |
| K- 07 40 15 68 | R 3/8        | G 1/4         | 17,0    | 11,5    | 17 mm |
| K- 07 40 15 69 | R 1/2        | G 1/8         | 19,5    | 14,0    | 22 mm |
| K- 07 40 15 70 | R 1/2        | G 1/4         | 20,0    | 14,0    | 22 mm |
| K- 07 40 15 71 | R 1/2        | G 3/8         | 20,0    | 14,0    | 22 mm |
| K- 07 40 15 72 | R 3/4        | G 3/8         | 23,0    | 16,5    | 27 mm |
| K- 07 40 15 73 | R 3/4        | G 1/2         | 23,0    | 16,5    | 27 mm |
| K- 07 40 15 74 | R 1          | G 1/2         | 25,0    | 16,0    | 34 mm |
| K- 07 40 15 75 | R 1          | G 3/4         | 25,0    | 18,0    | 34 mm |