

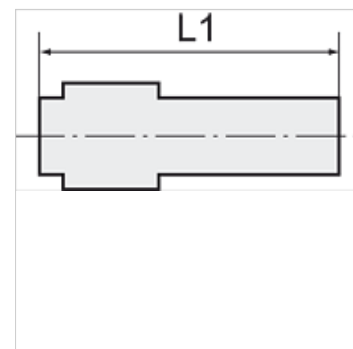
K-RD STUECKE PP

Reducers

HANSA FLEX

Vlastnosti

Pracovní tlak	on request
Provozní teplota	Max. +20 °C
Materiál	Polypropylene (PP)
Těsnicí materiál	Nitrilkaučuk



Upozornění

Další údaje na dotaz.

Popis

Lightweight, push-in fittings distinguished by high strength, toughness, resistance to abrasion and impact resistance - ideal for a wide range of applications. Plastic and metal tubes are connected together quickly and easily. Suitable for compressed air or liquids, with good resistance to a large number of chemicals.

Výrobek

Označení	pro větší Ø hadice	L1 (mm)	Hrdlo trubky (mm)
K- 07 40 29 00	22 mm	127,0	32
K- 07 40 29 01	28 mm	133,3	32