

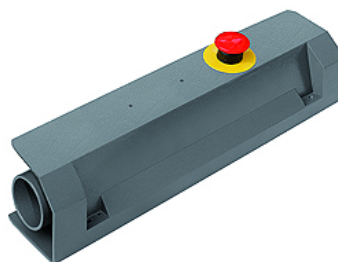
K-ZWEIHAND S KONSOLE KOMPL

Complete pushbutton panel

HANSA FLEX

Vlastnosti

Média	Filtered, unlubricated compressed air
Provozní tlak	2.5 - 8 bar
Teplotní rozsah	-10 °C to +60 °C
Přípoj	Push-in fitting for pipe 4 mm
Ovládání	Pneumatic
Průtočné množství vzduchu	85 NI/min
Max. časový posun vstupního signálu	0,4 s



Upozornění

Další údaje na dotaz.

Popis

This pushbutton panel according to EN574 Type III A is comprised of a dual manual control valve with a housing and manifold. The valve only generates an output signal if two synchronised input signals are received within < 0.4 sec. If one input signal is interrupted, the output signal is interrupted as well. An emergency stop valve with a mushroom pushbutton is included. The housing can be screwed to the wall in any position. The valve manifold can optionally be supplied without the housing and with a DIN bar adapter. Applications: Two-hand safety valve for start-of-cycle control on a pneumatically operated machine.

Výrobek

Označení	Definice
K- 07 15 26 08	Complete pushbutton panel with safety valve