

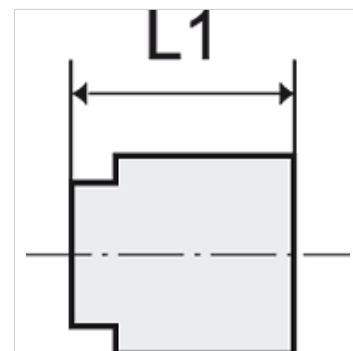
# K-EINPRESSPATRONE

Press-in sleeves - can only be pressed into plastic

**HANSA FLEX**

## Vlastnosti

<b>Pracovní tlak</b>	Max. 15 bar, coarse vacuum
<b>Oblast použití</b>	Air, vacuum
<b>doporučené hadice</b>	PU or PA (nylon)
<b>Média</b>	Compressed air and all gases or liquids that are compatible with the materials
<b>Teplotní rozsah</b>	-20 °C to +80 °C
<b>Těsnicí plocha</b>	Parallel version: O-ring in housing, Conical version: thread coating
<b>Materiál</b>	Plastic, Nickel plated brass
<b>Přítlačný kroužek</b>	Plastic



## Upozornění

Only in plastic press-fitted  
Další údaje na dotaz.

## Popis

Push-in fittings series manufactured in plastic and nickel-plated brass. All parts are suitable for use with hoses, tubes or pipes made of plastic and copper.

## Výrobek

Označení	pro vnější Ø hadice	L1 (mm)
K- 07 40 09 95	4 mm	11,3
K- 07 40 09 96	6 mm	11,9
K- 07 40 09 97	8 mm	13,7
K- 07 40 09 98	10 mm	15,2
K- 07 40 09 99	12 mm	17,6