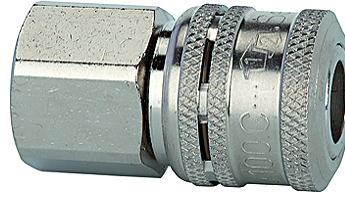


# K-LKM S NW7,2 IG

Safety couplings DN 7.2, female

## Vlastnosti

Provozní tlak	0 - 35 bar, maximum static working pressure (non-pulsating)
Průtok vzduchu	1.100 l/min (at $\Delta p = 0.5$ bar)
Teplota média	-30 °C to +100 °C
Pouzdro, objímka, tělo ventilu	Nickel-plated brass
Pružina, kuličky	Stainless-steel
Těsnicí materiál	Nitrilkaučuk



## Upozornění

Další údaje na dotaz.

## Popis

One-hand safety coupling with double locking mechanism. Connection: Similar to standard couplings, simply by pressing the plug into the coupling. Disconnection: The first locking mechanism is accessible when the sleeve is pushed back. The coupling valve closes. Air can then be relieved from the plug side (hose). The second locking mechanism is released by actuating the unlocking sleeve again. The coupling can now be disconnected.

## Výrobek

Označení	Přípoj	Délka (mm)	SW (mm)
K- 07 35 02 95	G 1/4 female	46,0	22
K- 07 35 02 96	G 3/8 female	46,0	22
K- 07 35 02 97	G 1/2 female	49,0	24

## Přídavné elementy

K-NIPPEL KUPPL NW7 AG VZ	Plugs for couplings DN 7.2 - DN 7.8, hardened, galvanised steel, male
K-NIPPEL KUPPL NW7 IG VZ 1	Plugs for couplings DN 7.2 - DN 7.8, hardened and galvanised steel, female
K-TUE 7,2 7,8 ST VZ 1	Stems for couplings DN 7.2 - DN 7.8, hardened, galvanised steel,