

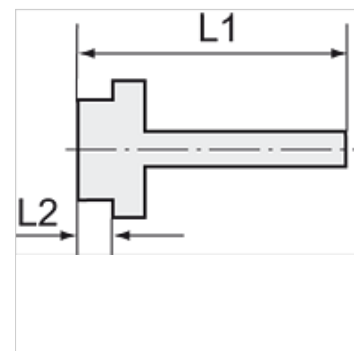
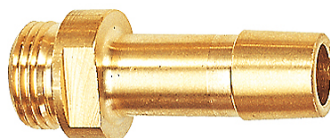
K-EST 12 MS

Male stems for coupling NW12 MS

HANSA FLEX

Vlastnosti

Pracovní tlak	10 bar
Teplota média	max. +90 °C
Teplota okolí	Max. +90 °C
Materiál	Brass with a bare metal surface



Upozornění

The dimensions of the standard screw fittings may change slightly during the life of the catalogue as a result of optimisation processes.
Další údaje na dotaz.

Další informace

Further types and dimensions on request.

Výrobek

Označení	Závit	pro hadici	L1 (mm)	L2 (mm)	SW
K- 07 35 00 88	G 1/2	LW 16 mm	58,0	10,0	20 mm