

# K-TUE IG ES

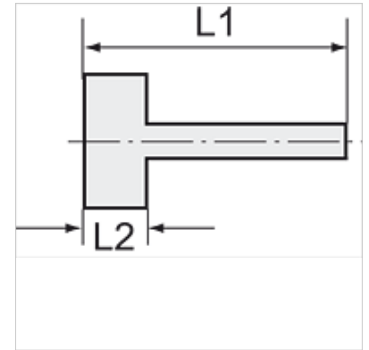
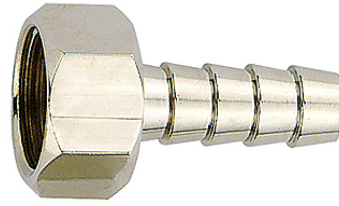
Female hose fittings with female thread stainless steel

**HANSA FLEX**

## Vlastnosti

Pracovní tlak Max. 20 bar

Materiál ušlechtilá ocel 1.4571



## Upozornění

The dimensions of the standard screw fittings may change slightly during the life of the catalogue as a result of optimisation processes.

Další údaje na dotaz.

## Další informace

Further types and dimensions on request.

## Výrobek

Označení	Závit	pro hadici	L1 (mm)	L2 (mm)	SW
K- 07 40 13 30	G 1/8	LW 6 mm	35,0	10,0	12 mm
K- 07 40 13 31	G 1/8	LW 8 mm	35,0	10,0	12 mm
K- 07 40 13 32	G 1/4	LW 6 mm	36,0	11,0	17 mm
K- 07 40 13 33	G 1/4	LW 8 mm	36,0	11,0	17 mm
K- 07 40 13 34	G 1/4	LW 10 mm	36,0	11,0	17 mm
K- 07 40 13 35	G 1/4	LW 13 mm	40,5	11,0	17 mm
K- 07 40 13 36	G 3/8	LW 6 mm	36,0	11,0	19 mm
K- 07 40 13 37	G 3/8	LW 8 mm	36,0	11,0	19 mm
K- 07 40 13 38	G 3/8	LW 10 mm	36,0	11,0	19 mm
K- 07 40 13 39	G 3/8	LW 13 mm	40,5	11,0	19 mm
K- 07 40 13 40	G 1/2	LW 6 mm	39,0	14,5	24 mm
K- 07 40 13 41	G 1/2	LW 8 mm	39,0	14,5	24 mm
K- 07 40 13 42	G 1/2	LW 10 mm	39,0	14,5	24 mm
K- 07 40 13 43	G 1/2	LW 13 mm	44,0	14,5	24 mm