

10



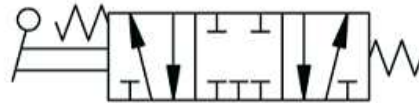
monostabil
Monostable

12



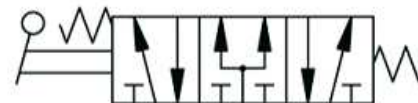
monostabil
Monostable

14



monostabil, Mitte geschlossen
Monostable, mid-position closed

16



monostabil, Mitte belüftet
Monostable, mid-position
pressurised

18



stabil für 5/3, Mitte entlüftet
Stable for 5/3, mid-position
exhausted

11



bistabil
Bistable

13



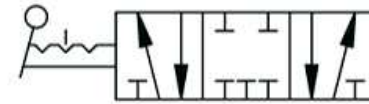
bistabil
Bistable

15



monostabil, Mitte entlüftet
Monostable, mid-position
exhausted

17



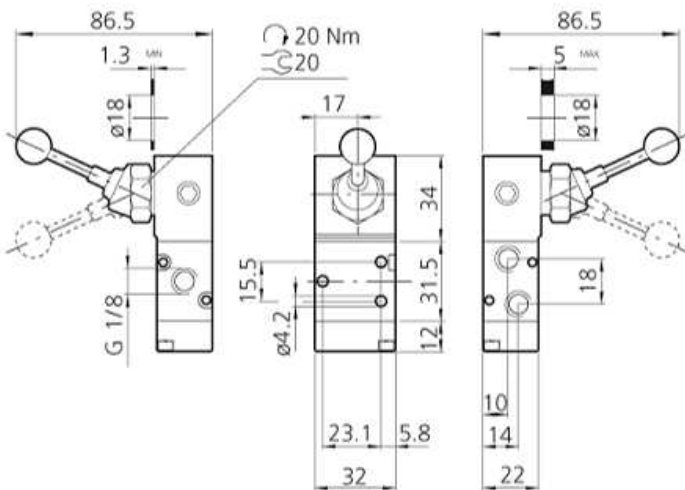
stabil für 5/3, Mitte geschlossen
Stable for 5/3, mid-position
closed

19

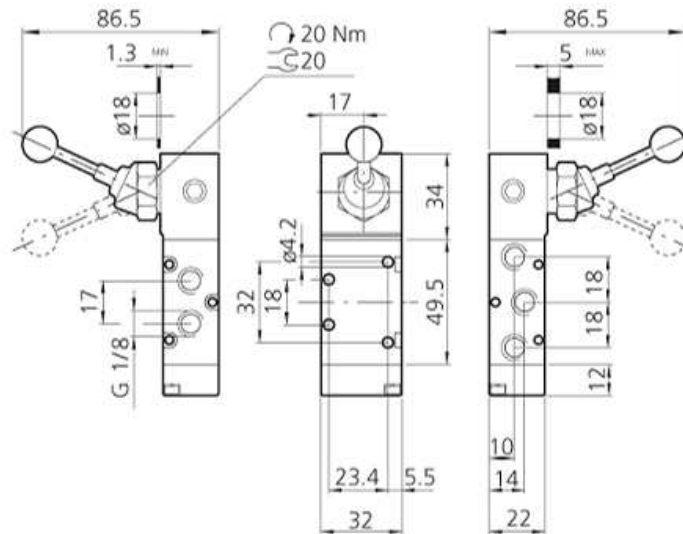


stabil für 5/3, Mitte belüftet
Stable for 5/3, mid-position
pressurised

90° - HEBEL 3/2, 1/8"
90° LEVER 3/2, 1/8"



90° - HEBEL 5/2, 1/8"
90° LEVER 5/2, 1/8"



FRONTHEBEL 5/3, 1/8"
FRONT LEVER 5/3, 1/8"

