

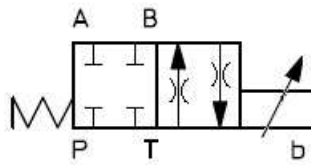
HK DKZE A

Proportional Magnetweventil NG10

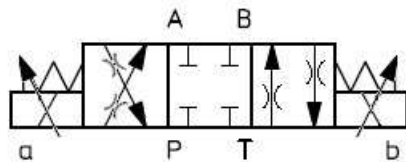
Proportional solenoid-operated directional control valve size 10



Schaltsymbole, Ausführungen / Symbols, Design



HK DKZE A 151 L5

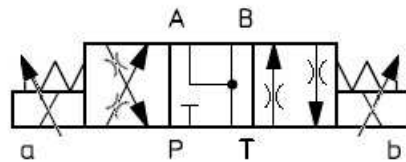


HK DKZE A 171 D5

HK DKZE A 171 S3

HK DKZE A 171 S5

HK DKZE A 171 L5



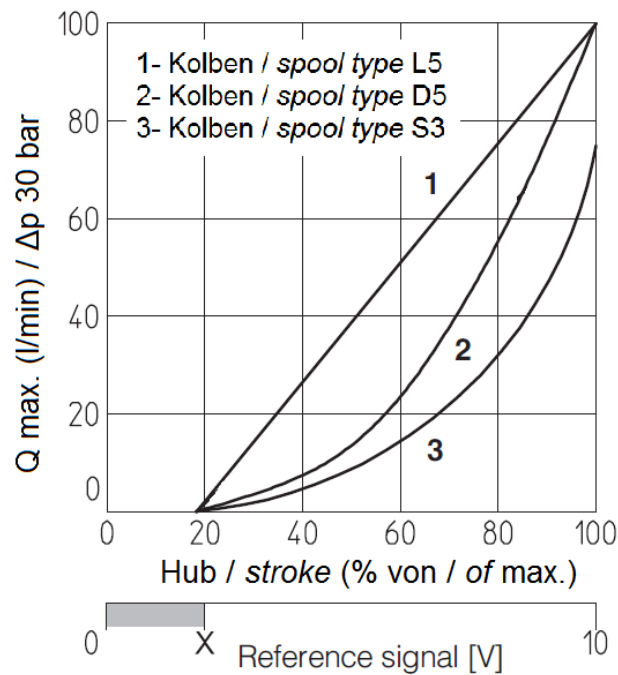
HK DKZE A 173 D5

HK DKZE A 173 S3

HK DKZE A 173 L5

Diagramme, Kennlinien / Diagram, chart

Regelkennlinie HK DKZE A Regulation diagram HK DKZE A



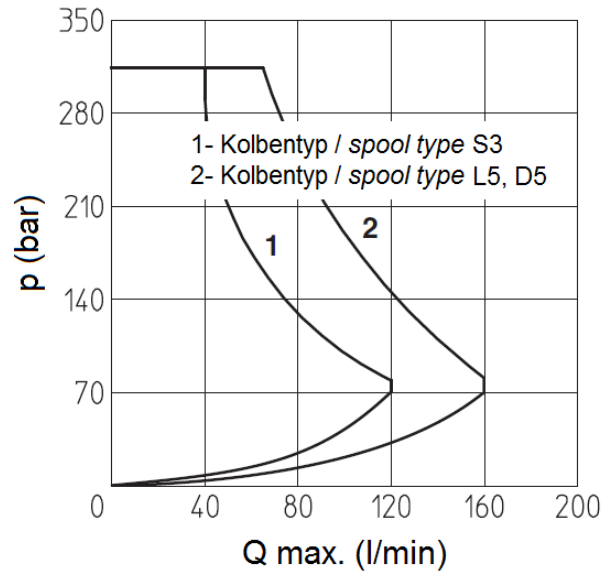
HK DKZE A

Proportional Magnetweventil NG10

Proportional solenoid-operated directional control valve size 10

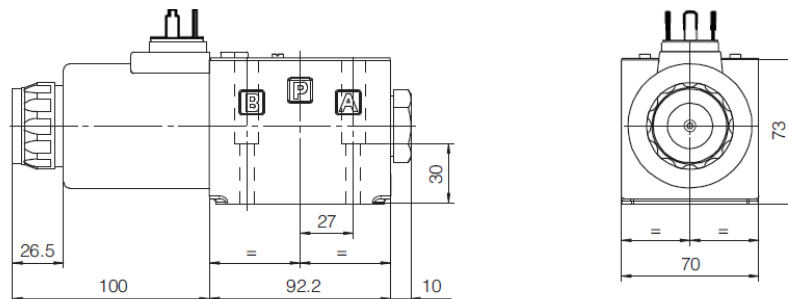
HANSA FLEX

Schaltleistungsgrenzen HK DKZE A Operating limits HK DKZE A

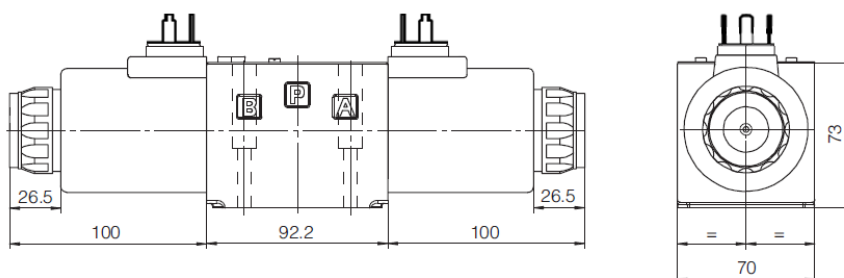


Abmessungen / Dimensions

HK DKZE A 15*



HK DKZE A 17*



Schraubensatz: 4 Inbusschrauben M6x40 12.9

Screw set: 4 socket head screws M6x40 12.9