

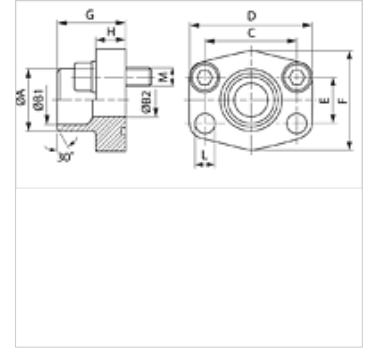
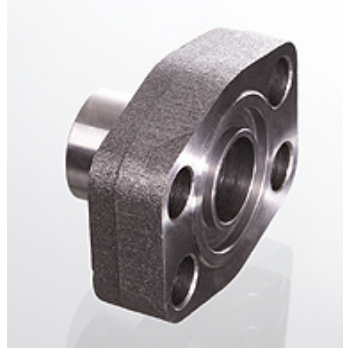
# AFS SRE (3000 PSI)

SAE-Anschweißbund

**HANSA FLEX**

## Eigenschaften

|                     |                         |
|---------------------|-------------------------|
| <b>Druckreihe</b>   | 3000 psi                |
| <b>Norm</b>         | SAE J 518 C<br>ISO 6162 |
| <b>Bauform</b>      | gerade                  |
| <b>Bauart</b>       | SAE-Anschweißbund       |
| <b>Befestigung</b>  | Schraubenbohrung        |
| <b>Lieferumfang</b> | nur Flansch             |
| <b>Werkstoff</b>    | S355J2G3                |
| <b>Oberfläche</b>   | schwarz geölt           |



## Hinweis

Der angeführte maximale Betriebsdruck ist bezogen auf den Flansch! Der tatsächliche Betriebsdruck wird bestimmt durch das Rohr (Wandstärke) sowie die Güte des Rohres!

Empfohlene Schrauben sind in den Spalten M (metr) oder M (unc) aufgeführt.

## Artikel

| Bezeichnung             | PB 10.9<br>(bar) | Baugröße | Rohr       | A<br>(mm) | B1<br>(mm) | B2<br>(mm) | G<br>(mm) | C<br>(mm) | E<br>(mm) | H<br>(mm) | L<br>(mm) | M metr. | M unc        |
|-------------------------|------------------|----------|------------|-----------|------------|------------|-----------|-----------|-----------|-----------|-----------|---------|--------------|
| <b>AFS 80 SRE 20</b>    | 350              | 1/2"     | 20 x 3     | 20        | 14,0       | 14         | 35,0      | 38,1      | 17,5      | 16,0      | 9,0       | M8x30   | 5/16"x1.1/4" |
| <b>AFS 80 SRE 22</b>    | 350              | 1/2"     | 22 x 3     | 22        | 16,0       | 13         | 35,0      | 38,1      | 17,5      | 16,0      | 9,0       | M8x30   | 5/16"x1.1/4" |
| <b>AFS 100 SRE 25</b>   | 350              | 3/4"     | 25 x 3     | 25        | 19,0       | 19         | 36,0      | 47,6      | 22,2      | 18,0      | 11,0      | M10x35  | 3/8"x1.1/2"  |
| <b>AFS 100 SRE 28</b>   | 350              | 3/4"     | 28 x 3     | 28        | 21,5       | 19         | 36,0      | 47,6      | 22,2      | 18,0      | 11,0      | M10x35  | 3/8"x1.1/2"  |
| <b>AFS 102 SRE 30</b>   | 315              | 1"       | 30 x 4     | 30        | 22,0       | 22         | 38,0      | 52,4      | 26,2      | 18,0      | 11,0      | M10x35  | 3/8"x1.1/2"  |
| <b>AFS 102 SRE 35</b>   | 315              | 1"       | 35 x 4     | 35        | 27,0       | 25         | 38,0      | 52,4      | 26,2      | 18,0      | 11,0      | M10x35  | 3/8"x1.1/2"  |
| <b>AFS 104 SRE 38</b>   | 250              | 1.1/4"   | 38 x 4     | 38        | 30,0       | 30         | 41,0      | 58,7      | 30,2      | 21,0      | 11,5      | M10x40  | 7/16"x1.1/2" |
| <b>AFS 104 SRE 42</b>   | 250              | 1.1/4"   | 42 x 3     | 43        | 36,0       | 31         | 41,0      | 58,7      | 30,2      | 21,0      | 11,5      | M10x40  | 7/16"x1.1/2" |
| <b>AFS 106 SRE 38</b>   | 200              | 1.1/2"   | 38 x 4     | 38        | 30,0       | 30         | 44,0      | 69,9      | 35,7      | 25,0      | 13,5      | M12x45  | 1/2"x1.3/4"  |
| <b>AFS 106 SRE 42</b>   | 200              | 1.1/2"   | 42 x 3     | 42        | 36,0       | 36         | 44,0      | 69,9      | 35,7      | 25,0      | 13,5      | M12x45  | 1/2"x1.3/4"  |
| <b>AFS 106 SRE 48.3</b> | 200              | 1.1/2"   | 48,3 x 4,5 | 49        | 38,0       | 38         | 44,0      | 69,9      | 35,7      | 25,0      | 13,5      | M12x45  | 1/2"x1.3/4"  |
| <b>AFS 108 SRE 60</b>   | 200              | 2"       | 60,3 x 5,6 | 61        | 49,0       | 49         | 45,0      | 77,8      | 42,9      | 25,0      | 13,5      | M12x45  | 1/2"x1.3/4"  |
| <b>AFS 110 SRE 76</b>   | 160              | 2.1/2"   | 76,1 x 7,1 | 77        | 62,0       | 62         | 50,0      | 88,9      | 50,8      | 25,0      | 13,5      | M12x45  | 1/2"x1.3/4"  |
| <b>AFS 112 SRE 76</b>   | 160              | 3"       | 76,1 x 7,1 | 77        | 62,0       | 62         | 51,0      | 106,4     | 61,9      | 26,0      | 17,5      | M16x50  | 5/8"x2"      |

PN = Nenndruck PB = max. Betriebsdruck

## Produktvarianten

**AFS SRE M (3000 / 6000 PSI)** SAE-Anschweißbund, mit metrischem Schraubensatz und O-Ring

**AFS SRE U (3000 / 6000 PSI)** SAE-Anschweißbund, mit UNC Schraubensatz und O-Ring