

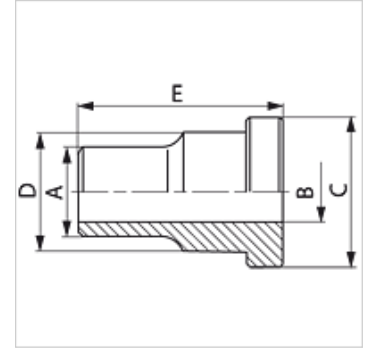
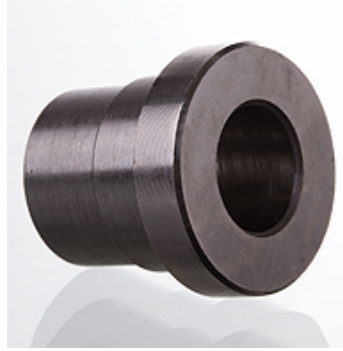
G VKS ST 250

Vierkantflansch, Cetop, Vorschweißbund

HANSA FLEX

Eigenschaften

Bauart	Vierkantflansch Cetop
Bauform	gerade
Norm	CETOP RP 63H ISO 6164
Werkstoff	S355J2G3
Oberfläche	schwarz geölt



Artikel

Bezeichnung	Druck PB (bar)	Baugröße	A (mm)	Ø B (mm)	C (mm)	D (mm)	E (mm)
G VKS 38 ST 250	250	3/8"	18	12,5	24,5	18,0	30
G VKS 12 ST 250	250	1/2"	22	15,0	30,2	24,0	30
G VKS 34 ST 250	250	3/4"	28	20,0	38,1	31,5	35
G VKS 1 ST 250	250	1"	35	25,0	44,4	38,0	40
G VKS 114 ST 250	250	1.1/4"	43	32,0	50,8	43,0	45
G VKS 112 ST 250	250	1.1/2"	50	38,0	60,3	50,0	50
G VKS 2 ST 250	250	2"	62	47,0	71,4	62,0	60
G VKS 212 ST 250	250	2.1/2"	76	58,0	87,2	76,0	70
G VKS 3 ST 250	250	3"	90	70,0	101,6	90,0	80
G VKS 312 ST 250	250	3.1/2"	102	80,0	119,0	102,0	90
G VKS 4 ST 250	250	4"	114	90,0	131,0	114,0	105

PN = Nenndruck PB = max. Betriebsdruck – Baureihe: LL = Sehr Leicht L = Leicht S = Schwer