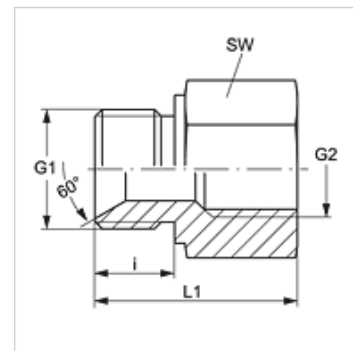
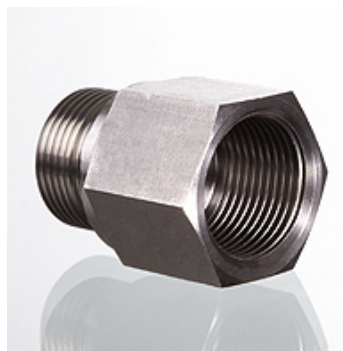


# G HB IR VA

## Aufschraub-Stutzen

### Eigenschaften

<b>Anschluss 1</b>	BSP-Außengewinde zylindrisch
<b>Dichtform 1</b>	60° Innenkonus
<b>Anschluss 2</b>	BSP-Innengewinde zylindrisch
<b>Dichtform 2</b>	flachdichtend
<b>Bauart</b>	Aufschraub-Stutzen
<b>Bauform</b>	gerade
<b>Werkstoff</b>	Edelstahl



### Artikel

Bezeichnung	G1	G2	SW (mm)
<b>G HB 02 IR VA</b>	G 1/8" -28	G 1/8" -28	17
<b>G HB 04 IR VA</b>	G 1/4" -19	G 1/4" -19	19
<b>G HB 06 IR VA</b>	G 3/8" -19	G 3/8" -19	24
<b>G HB 08 IR VA</b>	G 1/2" -14	G 1/2" -14	27
<b>G HB 12 IR VA</b>	G 3/4" -14	G 3/4" -14	32
<b>G HB 16 IR VA</b>	G 1" -11	G 1" -11	41
<b>G HB 20 IR VA</b>	G 1.1/4" -11	G 1.1/4" -11	50
<b>G HB 24 IR VA</b>	G 1.1/2" -11	G 1.1/2" -11	55
<b>G HB 32 IR VA</b>	G 2" -11	G 2" -11	70

SW = Schlüsselweite

### Produktvarianten

<b>G HB IR</b>	Aufschraub-Stutzen, Stahl
----------------	---------------------------