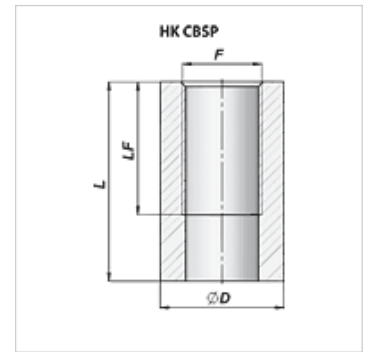
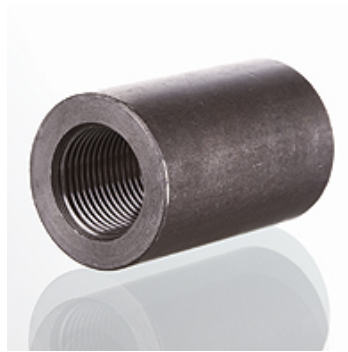


Eigenschaften

Werkstoff Stahl C22



Artikel

Bezeichnung	F	L (mm)	LF (mm)	Ø D (mm)	Gewicht (kg)
HK CBSP 040 000	G 1/4"	40	27	22	0,05
HK CBSP 060 000	G 3/8"	42	28	26	0,06
HK CBSP 080 000	G 1/2"	48	33	30	0,07