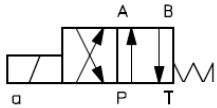


HK DHA

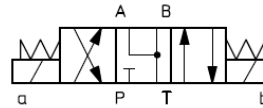
Magnetwegeventil NG6, Ex-geschützt
Solenoid operated valve Size6, Ex-proof



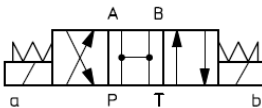
Schaltensymbole, Ausführungen / Symbols, Design



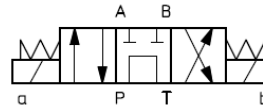
HK DHA 0631 2 GK 24



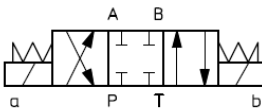
HK DHA 0713 GK 24



HK DHA 0710 GK 24



HK DHA 0714 GK 24



HK DHA 0711 GK 24

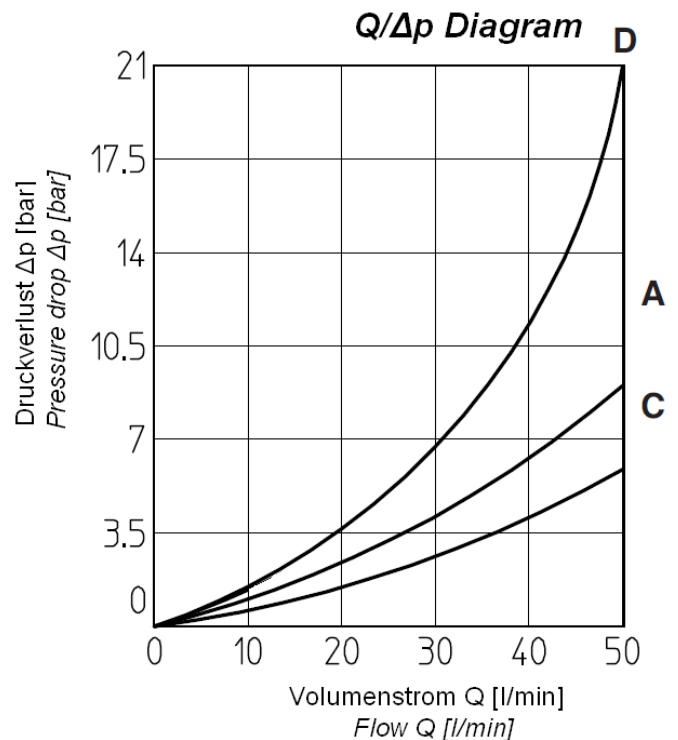


Kolbentypen, Durchflussrichtungen, Q/Δp – Kennlinien / Spool type, flow direction, Q/Δp - diagram

HK DHA

Durchflussrichtung Flow direction	Kolbentyp Spool type				
	P→A	P→B	A→T	B→T	P→T
0	C	C	C	C	
1	A	A	A	A	
3	A	A	C	C	
4	D	D	D	D	A

Q/Δp Diagramm



HK DHA

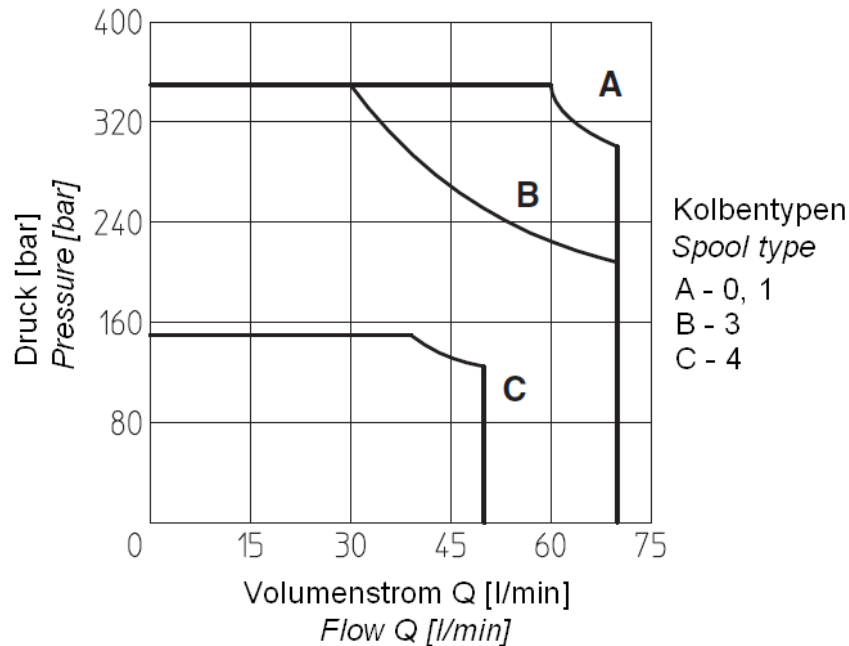
Magnetwegeventil NG6, Ex-geschützt
Solenoid operated valve Size6, Ex-proof

HANSA FLEX

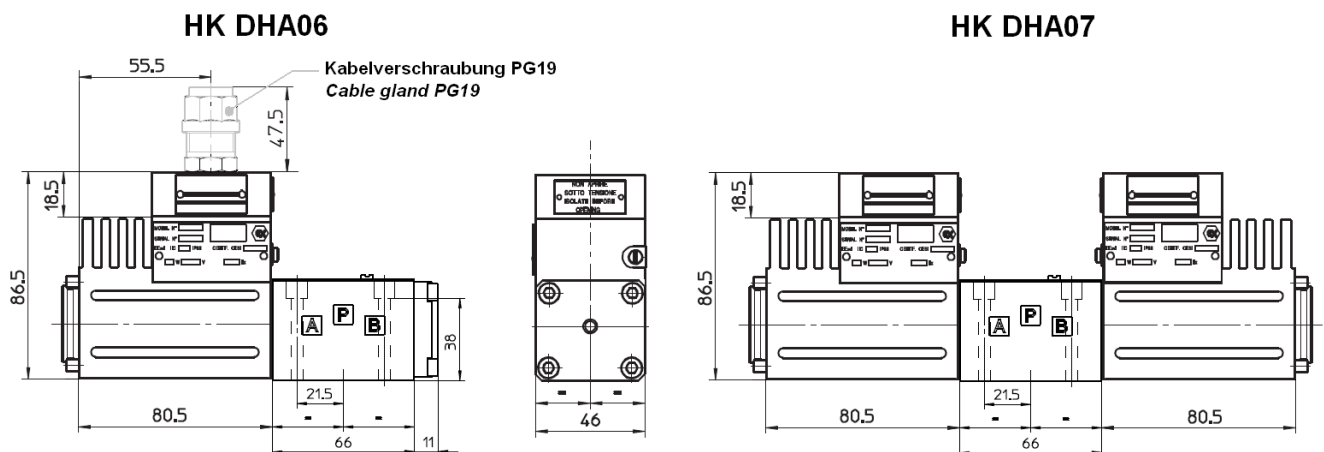
Diagramme, Kennlinien / Diagram, chart

Schaltleistungsgrenzen / Operating limits

HK DHA



Abmessungen / Dimensions



Schraubensatz: 4 Inbusschrauben M5x50 12.9

Screw set: 4 socket head screws M5x50 12.9

Kabelverschraubung PG19 nicht im Lieferumfang enthalten

Cable gland PG19 not included