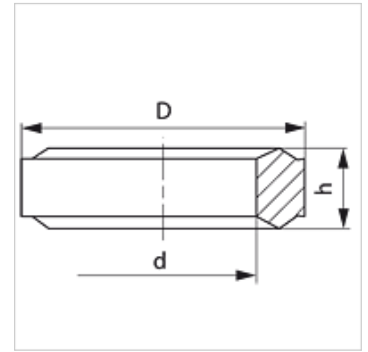


**Properties**

<b>Design</b>	Edge sealing ring
<b>Standard</b>	DIN 2353 ISO 8434-1
<b>Material</b>	Steel
<b>Surface</b>	electro galvanised

**Item**

Identification	for thread	D (mm)	d (mm)	h (mm)
DKI 1/4	G 1/4"	11,0	6,0	4,5
DKI 1/2	G 1/2"	18,3	12,5	5,0

**Product versions**

DKI VA	Edge sealing ring for internal thread, Stainless steel
--------	--

**Spare part for following products**

MVE MG	Pressure gauge connection fitting
MVR MG	Pressure gauge connection fitting
XMVR	Pressure gauge connection fitting
MVR HJ	Pressure gauge connection sockets
MVR	Pressure gauge connection fitting
XMVE	Pressure gauge connection fitting
MVO	Pressure gauge connection fitting
MVE	Pressure gauge connection fitting