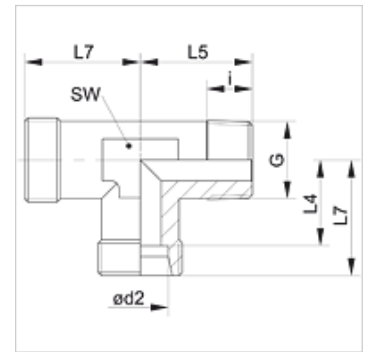


Properties

Connection 1	metric conical outer thread
Sealing form 1	thread seal
Connection 2 + 3	metric cylindrical outer thread
Sealing form 2 + 3	24° inner cone
Design	Screw-in fitting
Construction	L shaped
Standard	DIN 2353
Scope of supply	Socket (without union nut and cutting ring)
Material	Steel
Surface	electro galvanised



Note

Information about fitting, installation, pressure loads and permissible operating temperatures can be found in the technical information for pipe fittings.

Item

Identification	Series	Operating pressure	Ø d2 (mm)	G	i (mm)	L4 (mm)	L5 (mm)	L7 (mm)	AF (mm)
XLM 04 LL	LL	PN 100	4	M 8 x 1 K	8	11,0	17	15	9
XLM 05 LL	LL	PN 100	5	M 8 x 1 K	8	9,5	17	15	11
XLM 06 LL	LL	PN 100	6	M 10 x 1 K	8	9,5	17	15	9
XLM 08 LL	LL	PN 100	8	M 10 x 1 K	8	11,5	20	17	12
XLM NW 04 HL	L	PN 315	6	M 10 x 1 K	8	12,0	20	19	12
XLM NW 06 HL	L	PN 315	8	M 12 x 1.5 K	12	14,0	26	21	12
XLM NW 08 HL	L	PN 315	10	M 14 x 1.5 K	12	15,0	27	22	14
XLM NW 10 HL	L	PN 315	12	M 16 x 1.5 K	12	17,0	28	24	17
XLM NW 13 HL	L	PN 316	15	M 18 x 1.5 K	12	21,0	32	26	19
XLM NW 16 HL	L	PN 315	18	M 22 x 1.5 K	14	23,5	36	31	24
XLM NW 03 HS	S	PN 400	6	M 12 x 1.5 K	12	16,0	26	23	12
XLM NW 04 HS	S	PN 400	8	M 14 x 1.5 K	12	17,0	27	24	14
XLM NW 06 HS	S	PN 400	10	M 16 x 1.5 K	12	17,5	28	25	17
XLM NW 08 HS	S	PN 400	12	M 18 x 1.5 K	12	21,5	28	29	17
XLM NW 10 HS	S	PN 400	14	M 20 x 1.5 K	14	22,0	32	30	19
XLM NW 13 HS	S	PN 400	16	M 22 x 1.5 K	14	24,5	32	33	24

Series: LL = Very light L = Light S = Heavy – PN = Nominal pressure PB = Max. operating pressure – Ø d2 = External pipe diameter

Product versions

XLMK VA	Screw-in fitting, L shaped, Stainless steel
LMK	Screw-in fitting, L shaped, Steel