

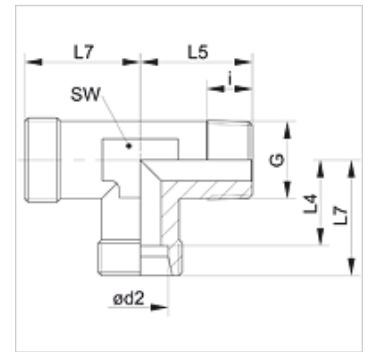
XLMK VA

Screw-in fitting, L shaped



Properties

Connection 1	metric conical outer thread
Sealing form 1	thread seal
Connection 2 + 3	metric cylindrical outer thread
Sealing form 2 + 3	24° inner cone
Design	Screw-in fitting
Construction	L shaped
Standard	DIN 2353
Scope of supply	Socket (without union nut and cutting ring)
Material	Stainless steel



Note

Information about fitting, installation, pressure loads and permissible operating temperatures can be found in the technical information for pipe fittings.

Item

Identification	Series	Operating pressure	Ø d2 (mm)	G	i (mm)	L4 (mm)	L5 (mm)	L7 (mm)	AF (mm)
XLM NW 04 HL VA	L	PN 315	6	M 10 x 1 K	8	12,0	20	19	12
XLM NW 06 HL VA	L	PN 315	8	M 12 x 1.5 K	12	14,0	26	21	12
XLM NW 08 HL VA	L	PN 315	10	M 14 x 1.5 K	12	15,0	27	22	14
XLM NW 10 HL VA	L	PN 315	12	M 16 x 1.5 K	12	17,0	28	24	17
XLM NW 13 HL VA	L	PN 316	15	M 18 x 1.5 K	12	21,0	32	26	19
XLM NW 16 HL VA	L	PN 315	18	M 22 x 1.5 K	14	23,5	36	31	24
XLM NW 03 HS VA	S	PN 400	6	M 12 x 1.5 K	12	16,0	26	23	12
XLM NW 04 HS VA	S	PN 400	8	M 14 x 1.5 K	12	17,0	27	24	14
XLM NW 06 HS VA	S	PN 400	10	M 16 x 1.5 K	12	17,5	28	25	17
XLM NW 08 HS VA	S	PN 400	12	M 18 x 1.5 K	12	21,5	28	29	17
XLM NW 10 HS VA	S	PN 400	14	M 20 x 1.5 K	14	22,0	32	30	19
XLM NW 13 HS VA	S	PN 400	16	M 22 x 1.5 K	14	24,5	32	33	24

Series: LL = Very light L = Light S = Heavy – PN = Nominal pressure PB = Max. operating pressure – Ø d2 = External pipe diameter

Product versions

XLMK	Screw-in fitting, L shaped, Steel
LMK VA	Screw-in fitting, L shaped, Stainless steel