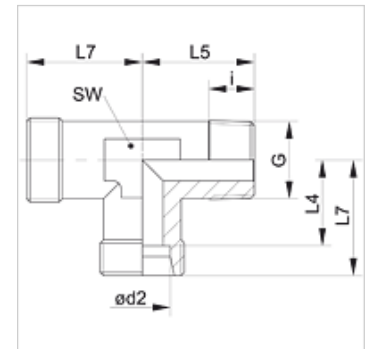


### Properties

<b>Connection 1</b>	NPT external threads
<b>Sealing form 1</b>	thread seal
<b>Connection 2 + 3</b>	metric cylindrical outer thread
<b>Sealing form 2 + 3</b>	24° inner cone
<b>Design</b>	Screw-in fitting
<b>Construction</b>	L shaped
<b>Standard</b>	DIN 2353
<b>Scope of supply</b>	Socket (without union nut and cutting ring)
<b>Material</b>	Steel
<b>Surface</b>	electro galvanised



### Note

Information about fitting, installation, pressure loads and permissible operating temperatures can be found in the technical information for pipe fittings.

### Item

Identification	Series	Operating pressure	Ø d2 (mm)	G	i (mm)	L4 (mm)	L5 (mm)	L7 (mm)	AF (mm)
XLN 04 LL	LL	PN 100	4	1/8" -27 NPT	8	11,0	17	15	9
XLN 06 LL	LL	PN 100	6	1/8" -27 NPT	8	9,5	17	15	9
XLN 08 LL	LL	PN 100	8	1/8" -27 NPT	8	11,5	20	17	12
XLN NW 04 HL	L	PN 315	6	1/8" -27 NPT	8	12,0	20	19	12
XLN NW 06 HL	L	PN 315	8	1/4" -18 NPT	12	14,0	26	21	12
XLN NW 08 HL	L	PN 315	10	1/4" -18 NPT	12	15,0	27	22	14
XLN NW 10 HL	L	PN 315	12	3/8" -18 NPT	12	17,0	28	24	17
XLN NW 13 HL	L	PN 315	15	1/2" -14 NPT	14	21,0	34	28	19
XLN NW 16 HL	L	PN 315	18	1/2" -14 NPT	14	23,5	36	31	24
XLN NW 20 HL	L	PN 160	22	3/4" -14 NPT	16	27,5	42	35	27
XLN NW 25 HL	L	PN 160	28	1" -11.5 NPT	18	30,5	48	38	36
XLN NW 32 HL	L	PN 160	35	1.1/4" -11.5 NPT	20	34,5	54	45	41
XLN NW 40 HL	L	PN 160	42	1.1/2" -11.5 NPT	22	40,0	61	51	50
XLN NW 03 HS	S	PN 630	6	1/4" -18 NPT	12	16,0	26	23	12
XLN NW 04 HS	S	PN 630	8	1/4" -18 NPT	12	17,0	27	24	14
XLN NW 06 HS	S	PN 630	10	3/8" -18 NPT	12	17,5	28	25	17
XLN NW 08 HS	S	PN 630	12	3/8" -18 NPT	12	21,5	31	29	17
XLN NW 10 HS	S	PN 630	14	1/2" -14 NPT	14	22,0	32	30	19
XLN NW 13 HS	S	PN 400	16	1/2" -14 NPT	14	24,5	32	33	24
XLN NW 16 HS	S	PN 400	20	3/4" -14 NPT	16	26,5	42	37	27
XLN NW 20 HS	S	PN 400	25	1" -11.5 NPT	18	30,0	48	42	36
XLN NW 25 HS	S	PN 400	30	1.1/4" -11.5 NPT	20	35,5	54	49	41
XLN NW 32 HS	S	PN 315	38	1.1/2" -11.5 NPT	22	41,0	61	57	50

Series: LL = Very light L = Light S = Heavy – PN = Nominal pressure PB = Max. operating pressure – Ø d2 = External pipe diameter

### Product versions

XLN VA	Screw-in fitting, L shaped, Stainless steel
LN	Screw-in fitting, L shaped, Steel