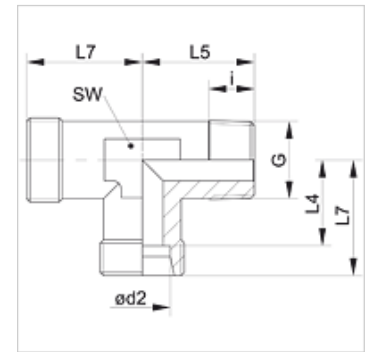


Properties

Connection 1	BSPT conical external threads
Sealing form 1	thread seal
Connection 2 + 3	metric cylindrical outer thread
Sealing form 2 + 3	24° inner cone
Design	Screw-in fitting
Construction	L shaped
Standard	DIN 2353 ISO 8434-1
Scope of supply	Socket (without union nut and cutting ring)
Material	Steel
Surface	electro galvanised



Note

Information about fitting, installation, pressure loads and permissible operating temperatures can be found in the technical information for pipe fittings.

Item

Identification	Series	Operating pressure	Ø d2 (mm)	G	i (mm)	L4 (mm)	L5 (mm)	L7 (mm)	AF (mm)
XLR 04 LL	LL	PN 100	4	R 1/8" K	8	11,0	17	15	9
XLR 05 LL	LL	PN 100	5	R 1/8" K	8	9,5	17	15	9
XLR 06 LL	LL	PN 100	6	R 1/8" K	8	9,5	17	15	9
XLR 08 LL	LL	PN 100	8	R 1/8" K	8	11,5	20	17	12
XLR NW 04 HL	L	PN 315	6	R 1/8" K	8	12,0	20	19	12
XLR NW 06 HL	L	PN 315	8	R 1/4" K	12	14,0	26	21	12
XLR NW 08 HL	L	PN 315	10	R 1/4" K	12	15,0	27	22	14
XLR NW 10 HL	L	PN 315	12	R 3/8" K	12	17,0	28	24	17
XLR NW 13 HL	L	PN 315	15	R 1/2" K	14	21,0	34	26	19
XLR NW 16 HL	L	PN 315	18	R 1/2" K	14	23,5	36	31	24
XLR NW 03 HS	S	PN 400	6	R 1/4" K	12	16,0	26	23	14
XLR NW 04 HS	S	PN 400	8	R 1/4" K	12	17,0	27	24	17
XLR NW 06 HS	S	PN 400	10	R 3/8" K	12	17,5	28	25	17
XLR NW 08 HS	S	PN 400	12	R 3/8" K	12	21,5	28	29	19
XLR NW 10 HS	S	PN 400	14	R 1/2" K	14	22,0	32	30	19
XLR NW 13 HS	S	PN 400	16	R 1/2" K	14	24,5	32	33	24

Series: LL = Very light L = Light S = Heavy – PN = Nominal pressure PB = Max. operating pressure – Ø d2 = External pipe diameter

Product versions

XLRK VA	Screw-in fitting, L shaped, Stainless steel
LRK	Screw-in fitting, L shaped, Steel