

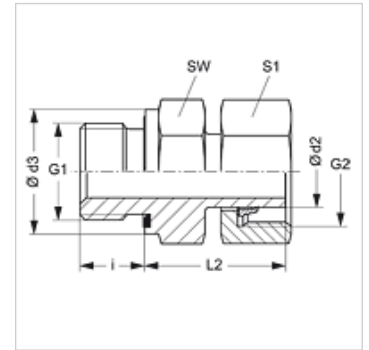
AVR ED MG

Screw-in fitting

HANSA FLEX

Properties

Connection 1	BSP external thread, cylindrical
Sealing form 1	Shape E
Connection 2	metric nut thread
Sealing form 2	Pipe socket with cutting ring
Design	Screw-in fitting
Construction	straight
Standard	DIN 2353 ISO 8434-1
Scope of supply	Pipe socket with union nut and pre-assembled cutting ring
Material	Brass



Note

Information about fitting, installation, pressure loads and permissible operating temperatures can be found in the technical information for pipe fittings.

Item

Identification	Series	Operating pressure	Ø d2 (mm)	G1	G2	Ø d3 (mm)	i (mm)	L2 (mm)	AF (mm)	S1
AVR NW 04 L ED MG	L	PN 200	6	G 1/8" -28	M 12 x 1.5	14,0	8	24,5	14	14
AVR NW 06 L ED MG	L	PN 200	8	G 1/4" -19	M 14 x 1.5	18,7	12	29,5	19	17
AVR NW 08 L ED MG	L	PN 200	10	G 1/4" -19	M 16 x 1.5	18,7	12	27,5	19	19
AVR NW 10 L ED MG	L	PN 200	12	G 3/8" -19	M 18 x 1.5	22,0	12	34,0	22	22
AVR NW 13 L ED MG	L	PN 200	15	G 1/2" -14	M 22 x 1.5	26,7	14	32,0	27	27
AVR NW 20 L ED MG	L	PN 100	22	G 3/4" -14	M 30 x 2	32,0	16	32,5	32	36

Series: LL = Very light L = Light S = Heavy - PN = Nominal pressure PB = Max. operating pressure - Ø d2 = External pipe diameter

Product versions

AVR ED	Screw-in fitting, Steel
AVR ED VA	Screw-in fitting, Stainless steel

Spare parts

WD	Soft seal for ED fittings
----	---------------------------