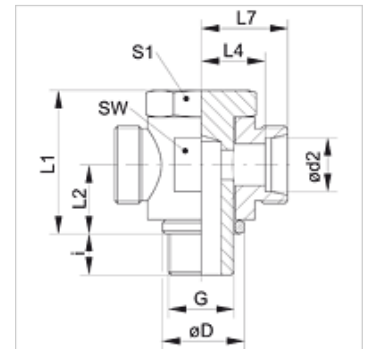


Properties

Connection 1	metric cylindrical outer thread
Sealing form 1	Edge sealing ring
Connection 2 + 3	metric cylindrical outer thread
Sealing form 2 + 3	24° inner cone
Design	Banjo coupling, throttle free
Construction	T shaped
Standard	ISO 8434-1
Scope of supply	Socket (without union nut and cutting ring)
Material	Steel
Surface	electro galvanised



Note

Information about fitting, installation, pressure loads and permissible operating temperatures can be found in the technical information for pipe fittings.

Item

Identification	Series	Operating pressure	Ø d2 (mm)	G	Ø D (mm)	i (mm)	L1 (mm)	L2 (mm)	L4 (mm)	L7 (mm)	AF (mm)	S1
XSTM NW 04 HL	L	PN 250	6	M 10 x 1	14	8	24,0	10,5	12,0	19,0	17	17
XSTM NW 06 HL	L	PN 250	8	M 12 x 1.5	17	12	30,0	14,0	14,5	21,5	22	19
XSTM NW 08 HL	L	PN 250	10	M 14 x 1.5	19	12	30,0	14,0	15,5	22,5	22	19
XSTM NW 10 HL	L	PN 250	12	M 16 x 1.5	21	12	36,0	16,5	18,0	25,0	27	24
XSTM NW 13 HL	L	PN 250	15	M 18 x 1.5	23	12	39,5	18,5	20,5	27,5	30	27
XSTM NW 16 HL	L	PN 100	18	M 22 x 1.5	27	14	45,0	21,5	21,0	28,5	32	30
XSTM NW 20 HL	L	PN 160	22	M 26 x 1.5	31	16	53,0	24,0	27,5	35,0	41	36
XSTM NW 25 HL	L	PN 160	28	M 33 x 2	39	18	66,0	30,5	32,0	39,5	50	46
XSTM NW 32 HL	L	PN 160	35	M 42 x 2	49	20	76,0	35,5	36,0	46,5	60	55
XSTM NW 40 HL	L	PN 160	42	M 48 x 2	55	22	87,0	40,5	40,5	51,5	70	60
XSTM NW 03 HS	S	PN 315	6	M 12 x 1.5	17	12	30,0	14,0	16,5	23,5	22	19
XSTM NW 04 HS	S	PN 315	8	M 14 x 1.5	19	12	30,0	14,0	16,5	23,5	22	19
XSTM NW 06 HS	S	PN 315	10	M 16 x 1.5	21	12	36,0	16,5	18,5	26,0	27	24
XSTM NW 08 HS	S	PN 315	12	M 18 x 1.5	23	12	39,5	18,5	20,0	27,5	30	27
XSTM NW 10 HS	S	PN 315	14	M 20 x 1.5	25	14	43,5	20,0	22,5	30,5	32	30
XSTM NW 13 HS	S	PN 315	16	M 22 x 1.5	27	14	45,0	21,5	22,0	30,5	32	30
XSTM NW 16 HS	S	PN 160	20	M 27 x 2	32	16	53,0	24,0	26,5	37,0	41	36
XSTM NW 20 HS	S	PN 160	25	M 33 x 2	39	18	66,0	30,5	31,5	43,5	50	46
XSTM NW 25 HS	S	PN 160	30	M 42 x 2	49	20	76,0	35,5	37,0	50,5	60	55
XSTM NW 32 HS	S	PN 160	38	M 48 x 2	55	22	87,0	40,5	41,5	57,5	70	60

Series: LL = Very light L = Light S = Heavy – PN = Nominal pressure PB = Max. operating pressure – Ø d2 = External pipe diameter

Product versions

STM Banjo fitting, throttle free, T shaped, Socket with union nut and cutting ring