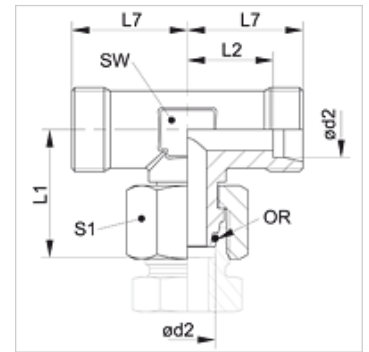


## Properties

<b>Connection 1</b>	metric nut thread
<b>Sealing form 1</b>	24° outer cone with O-ring
<b>Connection 2 + 3</b>	metric cylindrical outer thread
<b>Sealing form 2 + 3</b>	24° inner cone
<b>Design</b>	Adjustable direction fitting
<b>Construction</b>	T shaped
<b>Standard</b>	ISO 8434-1
<b>Scope of supply</b>	Socket (without union nut and cutting ring)
<b>Material</b>	Steel
<b>Surface</b>	electro galvanised



## Note

Information about fitting, installation, pressure loads and permissible operating temperatures can be found in the technical information for pipe fittings.

## Item

Identification	Series	Operating pressure	Ø d2 (mm)	L1 (mm)	L2 (mm)	L7 (mm)	AF (mm)	S1	OR
XVETO NW 04 HL	L	PN 315	6	26,0	12,0	19	12	14	4.0 x 1.5
XVETO NW 06 HL	L	PN 315	8	26,5	14,0	21	12	17	6.0 x 1.5
XVETO NW 08 HL	L	PN 315	10	29,0	15,0	22	14	19	7.5 x 1.5
XVETO NW 10 HL	L	PN 315	12	29,5	17,0	24	17	22	9.0 x 1.5
XVETO NW 13 HL	L	PN 315	15	33,0	21,0	28	19	27	12.0 x 2.0
XVETO NW 16 HL	L	PN 315	18	35,5	23,5	31	24	32	15.0 x 2.0
XVETO NW 20 HL	L	PN 160	22	39,5	27,5	35	27	36	20.0 x 2.0
XVETO NW 25 HL	L	PN 160	28	43,0	30,5	38	36	41	26.0 x 2.0
XVETO NW 32 HL	L	PN 160	35	51,0	34,5	45	41	50	32.0 x 2.5
XVETO NW 40 HL	L	PN 160	42	56,0	40,0	51	50	60	38.0 x 2.5
XVETO NW 03 HS	S	PN 630	6	27,0	16,0	23	12	17	4.0 x 1.5
XVETO NW 04 HS	S	PN 630	8	27,5	17,0	24	14	19	6.0 x 1.5
XVETO NW 06 HS	S	PN 630	10	30,0	17,5	25	17	22	7.5 x 1.5
XVETO NW 08 HS	S	PN 630	12	31,5	21,5	29	17	24	9.0 x 1.5
XVETO NW 10 HS	S	PN 630	14	35,0	22,0	30	19	27	10.0 x 2.0
XVETO NW 13 HS	S	PN 400	16	37,5	24,5	33	24	30	12.0 x 2.0
XVETO NW 16 HS	S	PN 400	20	45,0	26,5	37	27	36	16.3 x 2.4
XVETO NW 20 HS	S	PN 400	25	50,5	30,0	42	36	46	
XVETO NW 25 HS	S	PN 400	30	55,0	35,5	49	41	50	25.3 x 2.4
XVETO NW 32 HS	S	PN 315	38	63,0	41,0	57	50	60	33.3 x 2.4

Series: LL = Very light L = Light S = Heavy – PN = Nominal pressure PB = Max. operating pressure – Ø d2 = External pipe diameter

## Product versions

<b>XVETO VA</b>	Fitting, T shaped, Stainless steel
<b>VETO</b>	Fitting, T shaped, Steel