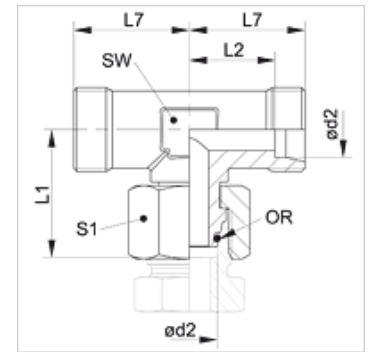


XVETO VA

Fitting, T shaped

Properties

Connection 1	metric nut thread
Sealing form 1	24° outer cone with O-ring
Connection 2 + 3	metric cylindrical outer thread
Sealing form 2 + 3	24° inner cone
Design	Adjustable direction fitting
Construction	T shaped
Standard	ISO 8434-1
Scope of supply	Socket (without union nut and cutting ring)
Material	Stainless steel



Note

Information about fitting, installation, pressure loads and permissible operating temperatures can be found in the technical information for pipe fittings.

Ordering information

Seals of NBR
FPM (Viton) on request

Item

Identification	Series	Operating pressure	Ø d2 (mm)	L1 (mm)	L2 (mm)	L7 (mm)	AF (mm)	S1	OR
XVETO NW 04 HL VA	L	PN 315	6	26,0	12,0	19	12	14	4.0 x 1.5
XVETO NW 06 HL VA	L	PN 315	8	27,5	14,0	21	12	17	6.0 x 1.5
XVETO NW 08 HL VA	L	PN 315	10	29,0	15,0	22	14	19	7.5 x 1.5
XVETO NW 10 HL VA	L	PN 315	12	29,5	17,0	24	17	22	9.0 x 1.5
XVETO NW 13 HL VA	L	PN 315	15	32,5	21,0	28	19	27	12.0 x 2.0
XVETO NW 16 HL VA	L	PN 315	18	35,5	23,5	31	24	32	15.0 x 2.0
XVETO NW 20 HL VA	L	PN 160	22	38,5	27,5	35	27	36	20.0 x 2.0
XVETO NW 25 HL VA	L	PN 160	28	41,5	30,5	38	36	41	26.0 x 2.0
XVETO NW 32 HL VA	L	PN 160	35	51,0	34,5	45	41	50	32.0 x 2.5
XVETO NW 40 HL VA	L	PN 160	42	56,0	40,0	51	50	60	38.0 x 2.5
XVETO NW 03 HS VA	S	PN 630	6	27,0	16,0	23	12	17	4.0 x 1.5
XVETO NW 04 HS VA	S	PN 630	8	27,5	17,0	24	14	19	6.0 x 1.5
XVETO NW 06 HS VA	S	PN 630	10	30,0	17,5	25	17	22	7.5 x 1.5
XVETO NW 08 HS VA	S	PN 630	12	31,0	21,5	29	17	24	9.0 x 1.5
XVETO NW 10 HS VA	S	PN 630	14	35,0	22,0	30	19	27	10.0 x 2.0
XVETO NW 13 HS VA	S	PN 400	16	36,5	24,5	33	24	30	12.0 x 2.0
XVETO NW 16 HS VA	S	PN 400	20	44,5	26,5	37	27	36	16.3 x 2.4
XVETO NW 20 HS VA	S	PN 400	25	50,0	30,0	42	36	46	20.3 x 2.4
XVETO NW 25 HS VA	S	PN 400	30	55,0	35,5	49	41	50	25.3 x 2.4
XVETO NW 32 HS VA	S	PN 315	38	63,0	41,0	57	50	60	33.3 x 2.4

Series: LL = Very light L = Light S = Heavy – PN = Nominal pressure PB = Max. operating pressure – Ø d2 = External pipe diameter

Product versions

XVETO	Fitting, T shaped, Steel
VETO VA	Fitting, T shaped, Stainless steel