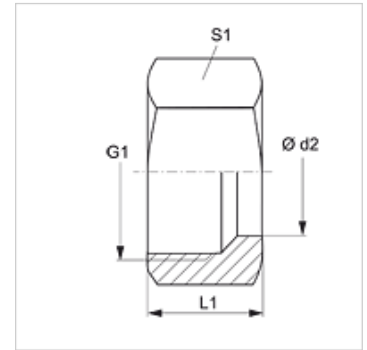
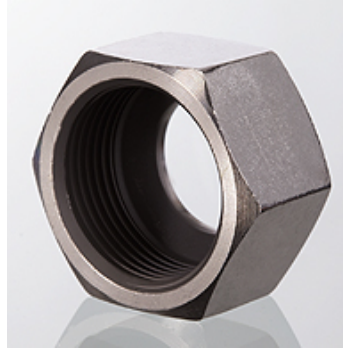


UEM F

Union nut F

Properties

| | |
|--------------------------|--------------------|
| Connection 1 | metric nut thread |
| Design | Union nut |
| Construction type | French series |
| Material | Steel |
| Surface | electro galvanised |



Note

Information about fitting, installation, pressure loads and permissible operating temperatures can be found in the technical information for pipe fittings.

Item

| Identification | Operating pressure | Ø d2 (mm) | G1 | L1 (mm) | S1 |
|--------------------|--------------------|--------------|------------|------------|----|
| UEM NW 10 F | PN 400 | 13,25 | M 20 x 1.5 | 17,0 | 27 |
| UEM NW 13 F | PN 400 | 16,75 | M 24 x 1.5 | 18,0 | 30 |
| UEM NW 16 F | PN 250 | 21,25 | M 30 x 1.5 | 20,5 | 36 |
| UEM NW 20 F | PN 250 | 26,75 | M 36 x 1.5 | 21,5 | 42 |
| UEM NW 25 F | PN 160 | 33,50 | M 45 x 1.5 | 23,5 | 55 |

Series: LL = Very light L = Light S = Heavy – PN = Nominal pressure PB = Max. operating pressure – Ø d2 = External pipe diameter