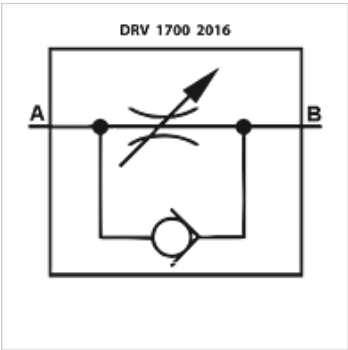


# DRV 1700

## Regulating check valve DVR 1700



Properties	
Scope of supply	with counter nut
Media	Mineral oil
Operating pressure	max. 210 bar



**Note**  
 These valves must be set according to the application.

Item						
Identification	Flow rate max. (L/min)	G1	A (mm)	B (mm)	C (mm)	Weight (kg)
DRV 1700-1/4	15	G 1/4" -19	56	60	17	0,15
DRV 1700-3/8	30	G 3/8" -19	65	73	22	0,28
DRV 1700-1/2	50	G 1/2" -14	87	85	27	0,52