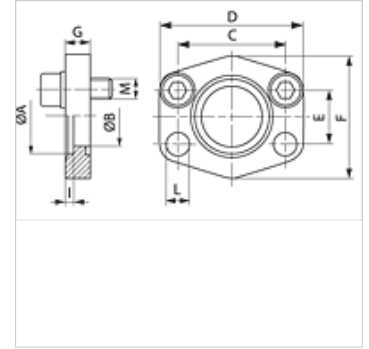


# AFC S M (3000 PSI)

SAE socket weld flange, ND 40

## Properties

<b>Pressure series</b>	3000 psi
<b>Standard</b>	SAE J 518 C ISO 6162
<b>Construction type</b>	ND 40
<b>Construction</b>	straight
<b>Design</b>	SAE socket weld flange
<b>Mounting</b>	Screw bore hole
<b>Scope of supply</b>	with metric screw set and O-ring
<b>Material</b>	S355J2G3 (ST52.3)
<b>Surface</b>	black oiled



## Note

The stated maximum working pressure relates to the flange. The actual working pressure is determined by the pipe (wall thickness) and the quality of the pipe.

## Item

Identification	PB 10.9 (bar)	Size	Pipe	A (mm)	Ø B (mm)	C (mm)	D (mm)	E (mm)	F (mm)	G (mm)	I (mm)	L (mm)	M metr.
<b>AFC 80 S M</b>	40	1/2"	22 x 2	22,5	15	38,1	56	17,5	46	10	3	9,0	M 8 x 25
<b>AFC 100 S M</b>	40	3/4"	28 x 2	28,5	20	47,6	65	22,2	50	12	4	11,0	M 10 x 30
<b>AFC 102 S M</b>	40	1"	35 x 2	35,5	29	52,4	70	26,2	55	12	4	11,0	M 10 x 30
<b>AFC 104 S M</b>	40	1.1/4"	42 x 2	42,5	34	58,7	79	30,2	68	12	4	11,5	M 10 x 30
<b>AFC 106 S M</b>	40	1.1/2"	48.3 x 3.25	49,0	42	69,9	93	35,7	78	15	4	13,5	M 12 x 35
<b>AFC 108 S M</b>	40	2"	60.3 x 3.65	61,0	53	77,8	102	42,9	90	15	4	13,5	M 12 x 35
<b>AFC 110 S M</b>	40	2.1/2"	76.1 x 3.65	77,0	64	88,9	114	50,8	105	15	4	13,5	M 12 x 35
<b>AFC 112 S M</b>	40	3"	88.9 x 4.05	90,0	80	106,4	134	61,9	124	20	5	17,5	M 16 x 40
<b>AFC 114 S M</b>	35	3.1/2"	101.6 x 4.5	103,0	93	120,7	152	69,9	136	20	5	17,5	M 16 x 40
<b>AFC 116 S M</b>	35	4"	114.3 x 4.5	116,0	105	130,2	162	77,8	146	25	6	17,5	M 16 x 45
<b>AFC 118 S M</b>	35	5"	139.7 x 4.85	141,0	126	152,4	190	92,1	170	28	8	17,5	M 16 x 45

PN = Nominal pressure PB = Max. operating pressure

## Product versions

**AFC S (3000 PSI)** SAE socket weld flange, ND 40, flange only